

Speaker's Profile



Mrs. Moh Moh Lwin

National Director

Dr. Moh Moh Lwin is the National Director at Sun Community Health Organization. She earned her medical degree in 2002 and completed an Executive Master's in Public Policy and Practice from the Graduate Institute Geneva in 2018. With over 19 years in public health, including 3+ years with a local NGO, she advocates for collaboration with private sector healthcare providers to address health equity challenges.

Dr. Lwin focuses on integrating health services to support Universal Health Coverage goals. She oversees a network of 6,000 healthcare providers, including general practitioners, pharmacies, and community volunteers, ensuring high-quality service delivery across Myanmar. Her strategic efforts aim to maximize service integration, enhance care quality, and build strong partnerships with local authorities. Committed to equitable health services, she employs private sector and community engagement strategies to create sustainable and cost-effective health solutions, significantly impacting Myanmar's healthcare landscape.

Achieving AIS Program Goals by conducting Private Sector Engagement



USAID
FROM THE AMERICAN PEOPLE



HIV/TB Agency, Information and Services Activity

Strengthening Health Services Provision in Conflict Situation: Leveraging Private Sector Partnership

05.07.2024





USAID
FROM THE AMERICAN PEOPLE



HIV/TB Agency, Information and Services Activity



USAID
FROM THE AMERICAN PEOPLE



HIV/TB Agency, Information and Services Activity

Localization & Establishment



“နေ” လူထုကျန်းမာရေး

- Population Services International (PSI), a US-based NGO has been one of the longest and largest implementing agencies for health in Myanmar since 1995.
- In 2016, given the evolution of funding instruments and trends for localization, PSI has carefully crafted and designed a 5-year deconsolidation plan for its implementing units to become local entities.
- PSI’s Sun Quality Health, a network of over 1,000 franchised private community clinics and Community Health Services Network with over 5,000 community volunteers have been transitioned to a single local NGO named Sun Community Health (SCH) in **January 2022**



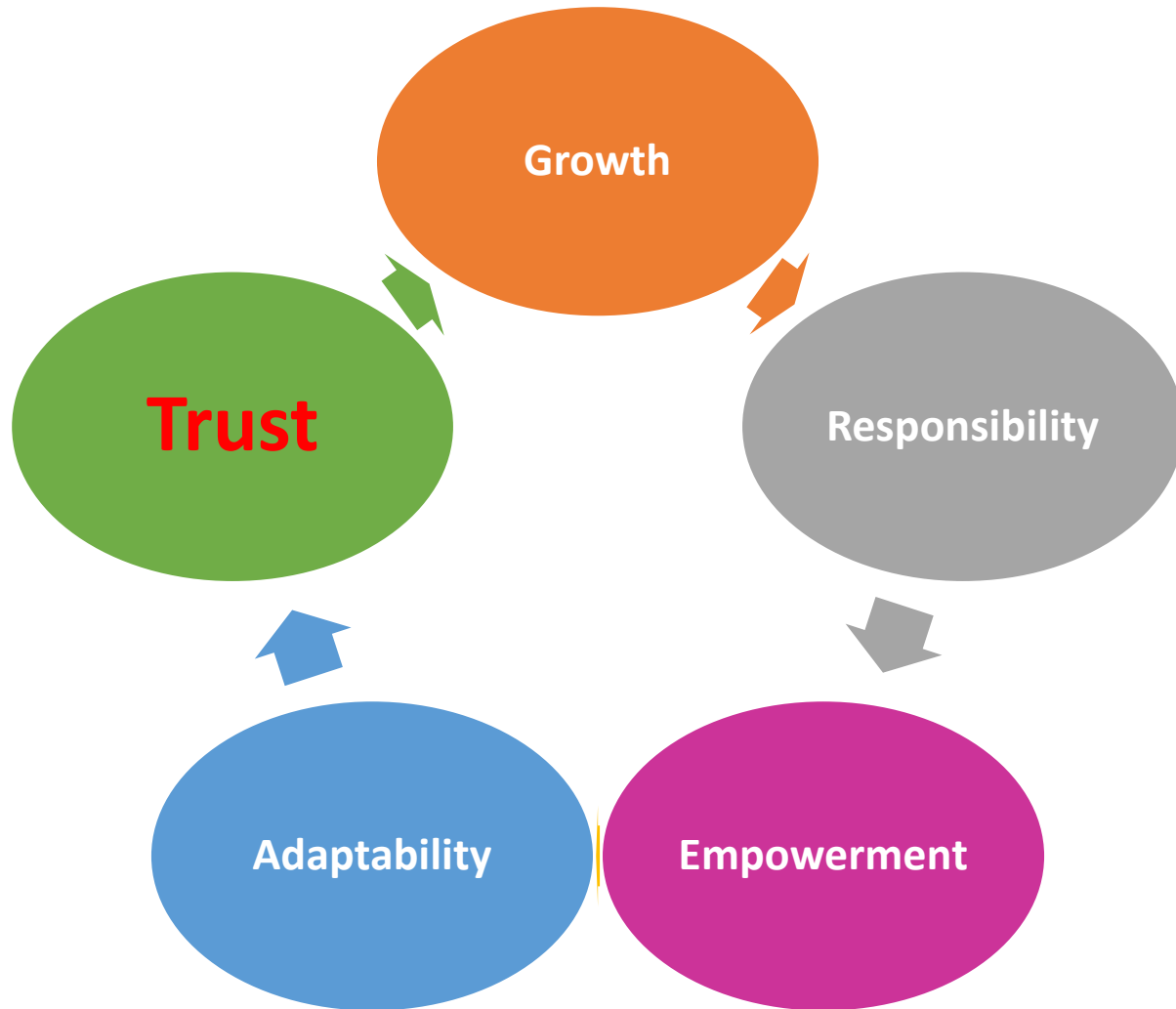
SCH Vision

Power of the community, to access the healthcare they need.

SCH Mission

Deliver quality healthcare **through networks and partners** in sustainable and innovative ways.

Values and Strategic Targets



Rationale and Background

- Accessibility
- Continuity of Care
- Resource Optimization
- Innovation and Flexibility
- Community Trust

SCH engagement strategy with Private Sector

TB, HIV, FH

Vertical Program

Monthly SSV

Routine Monitoring

QA Visit

Quality Assurance

Vertical Program Support

Franchisor-Franchisee Agreement

Primary Healthcare Services

Channel Management

Engagement by Segments

Provider Segmentation

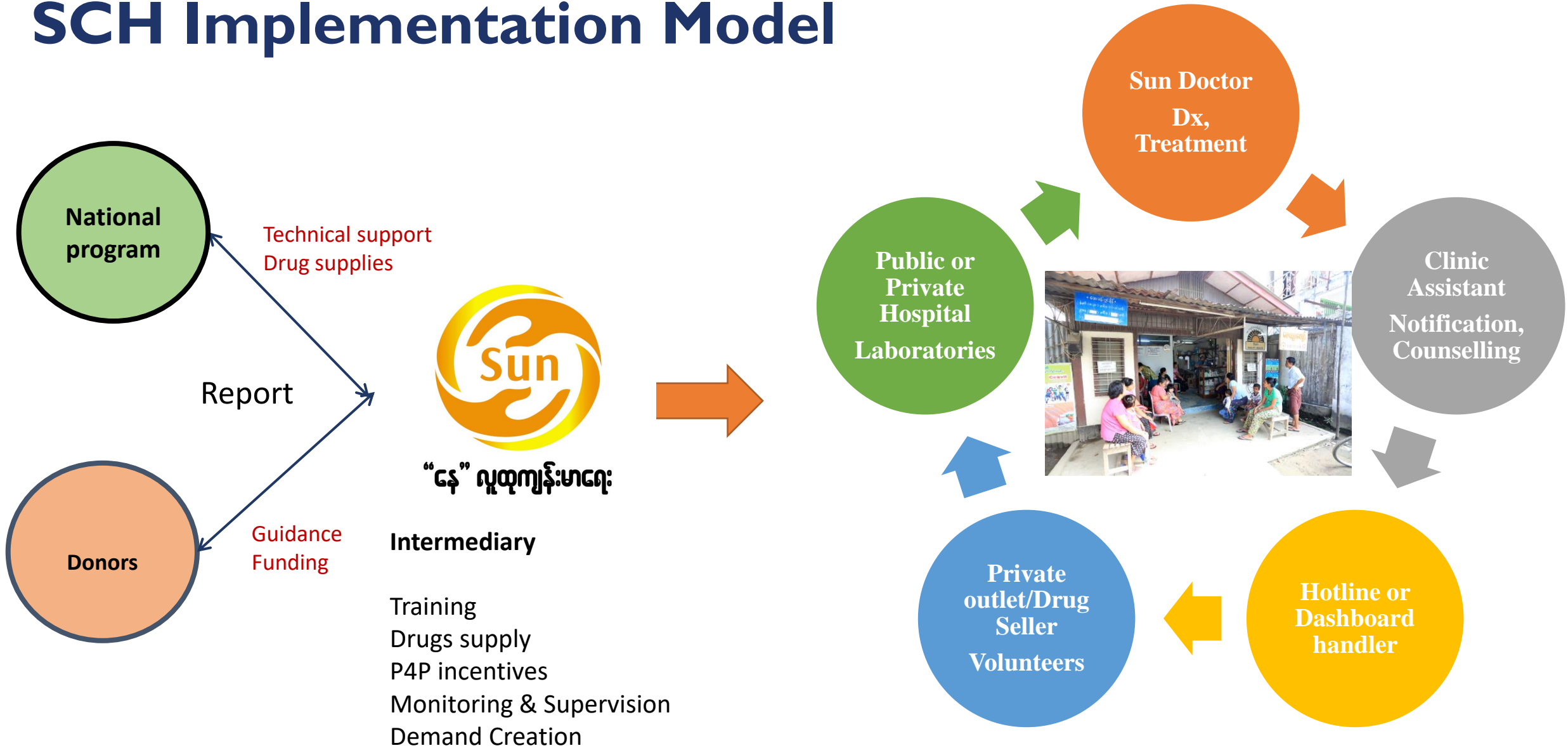
QI System

Accreditation and Certification

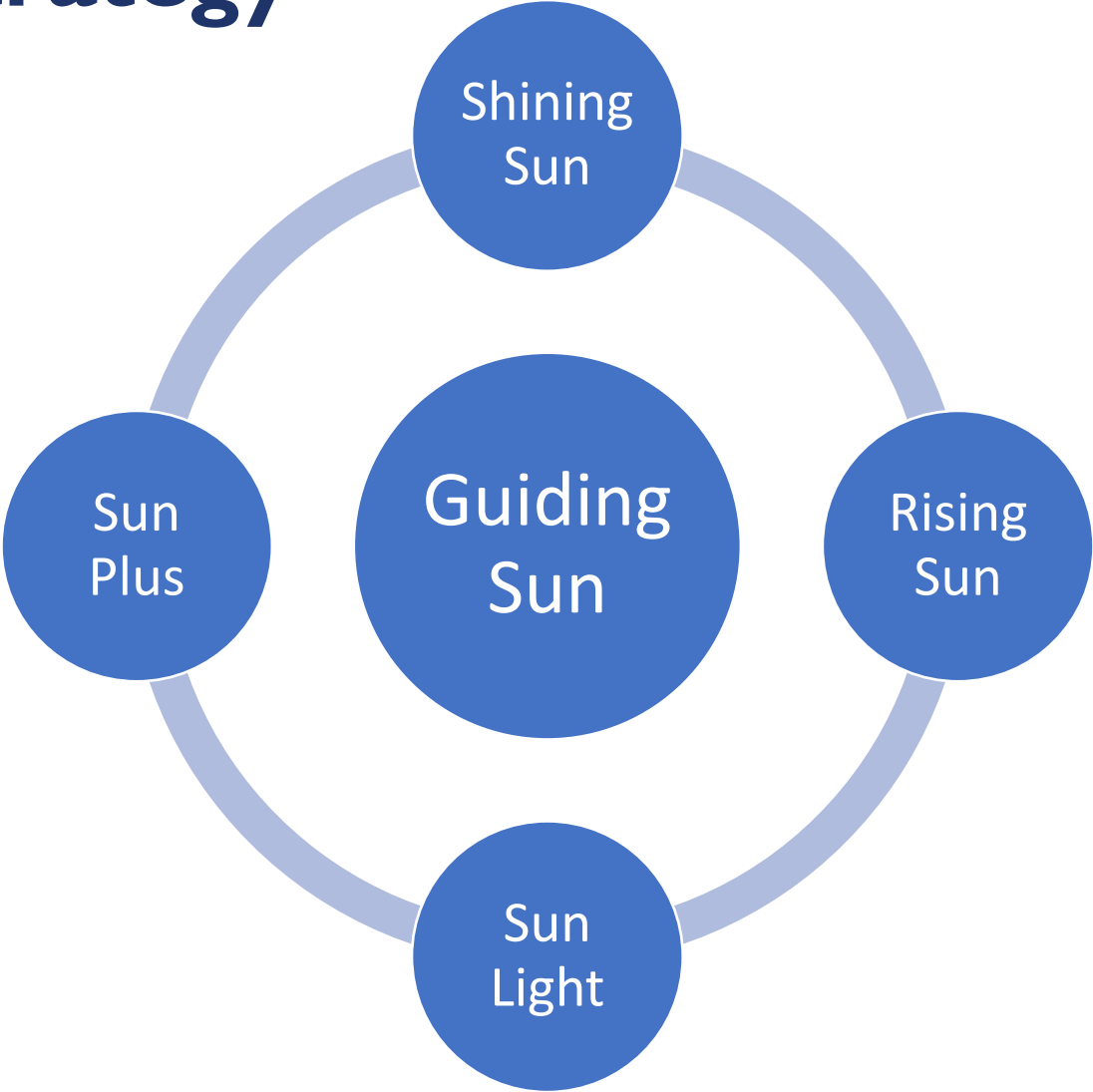
Service Utilization, Reward, Autonomy

Purchaser-Provider Contract

SCH Implementation Model

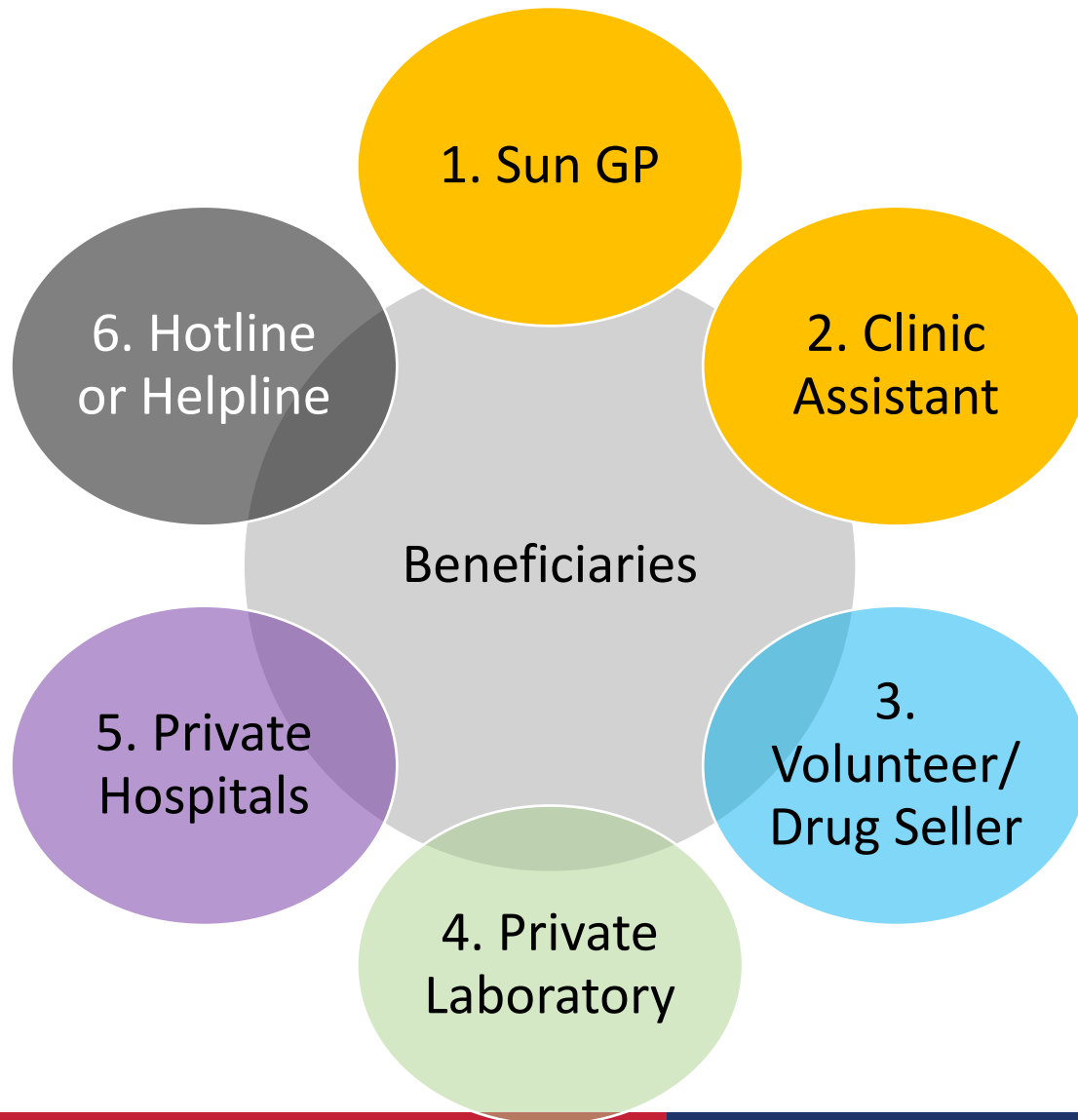


Provider Segmentation and multiple engagement Strategy



- *Guiding Suns* as representatives of SQH network to motivate the Rising Sun providers to become high performers, thereby expanding access to quality, affordable primary care to poor & vulnerable consumers.

Contracting – Service Purchasing – MNCH Model



- Network of Care
- Payment (output-based)
- Performance based payment

Key Learnings

Political and
Institutional
Commitment

Strong
Governance and
Coordination

Innovative
Financing

Integrated
Service Delivery

Adaptability and
Innovation

Capacity Building
and Knowledge
Management

Robust
Monitoring and
Evaluation

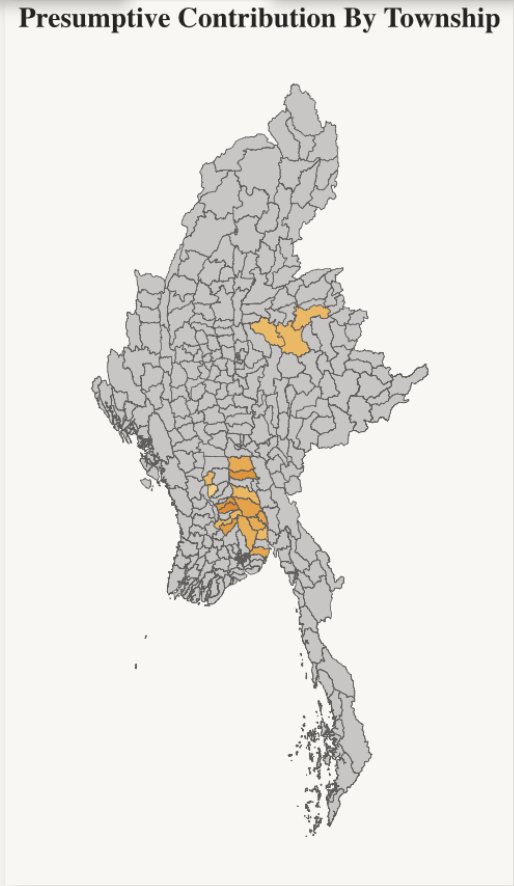
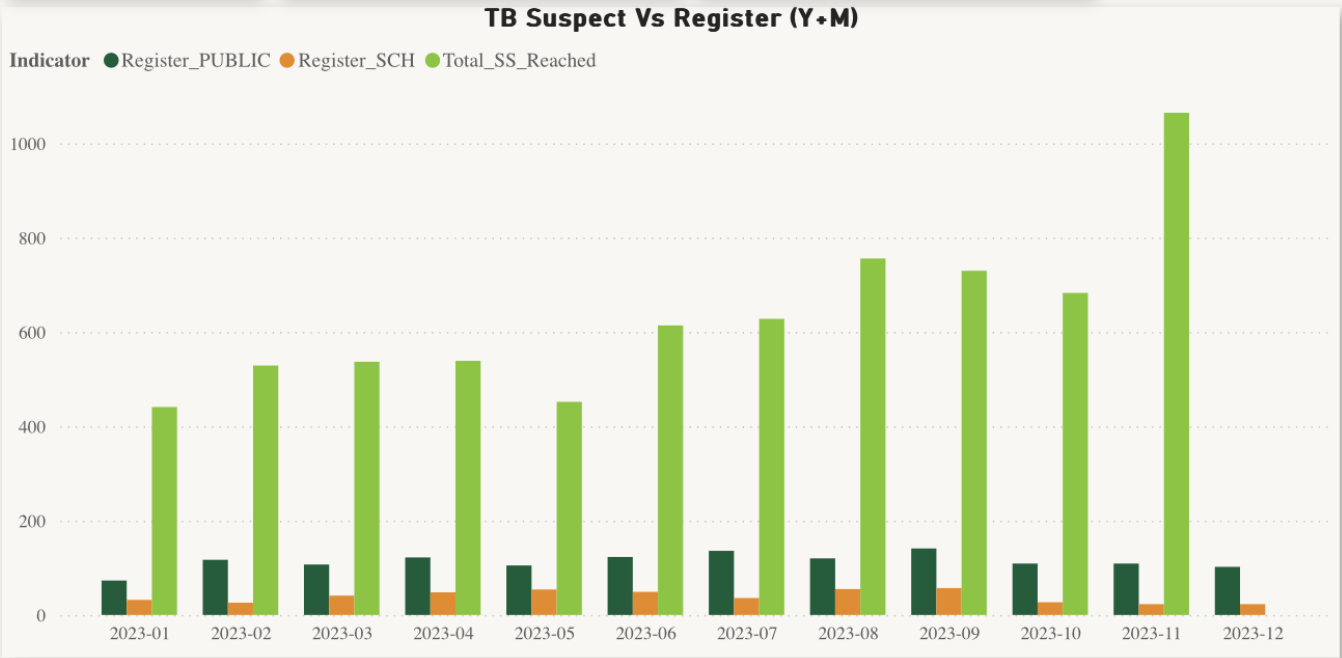
Ensuring Access
to Quality Care

Community
Engagement and
Awareness

Trust Building

AIS supported PSE under TB Care

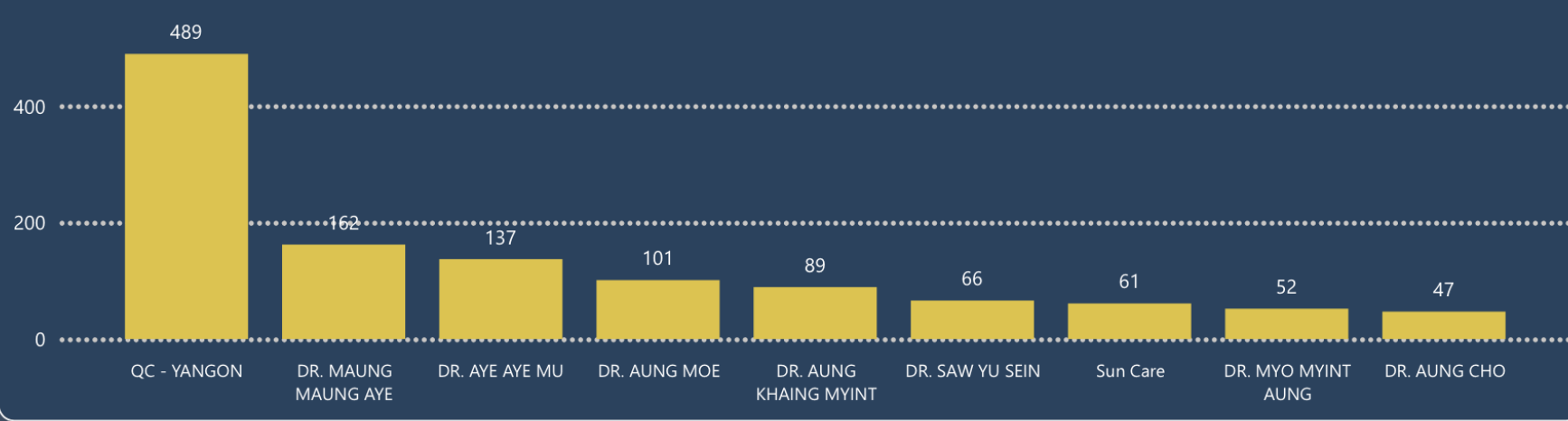
7069 Total Refer	6974 Total Presumptive	471 SCH Register	1364 PUBLIC Register	596 Reported Pharmacy
Total Register (SCH+PUBLIC) 1835	Bact_Confirmed_SCH 141	Bact_Confirmed_PUBLIC 658	Presumptive Contribution By Township	
	Clinical_Diagnosed_SCH 330	Clinical_Diagnosed_PUBLIC 706		



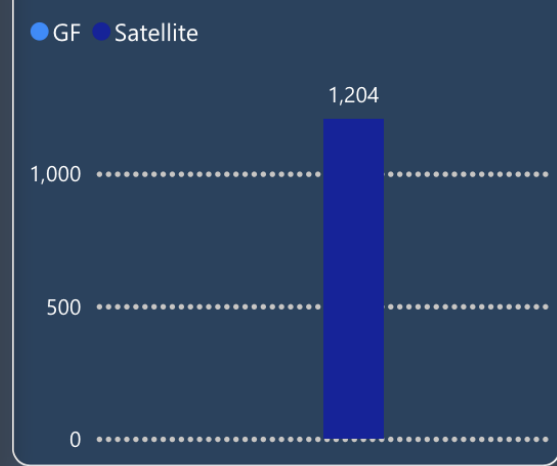
713 Enrolled Patients from April-June 2023 had a favorable outcome with 89%

AIS supported PSE under HIV Care

Current on ART by Provider

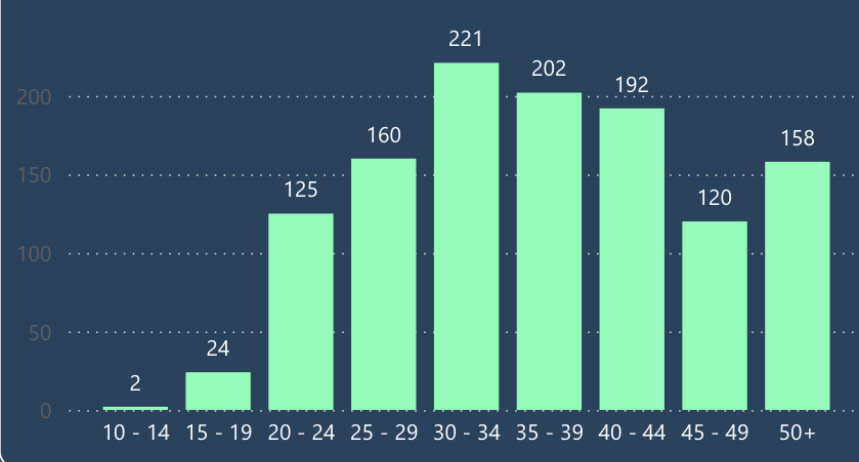


Current on ART by Donor Cohoc

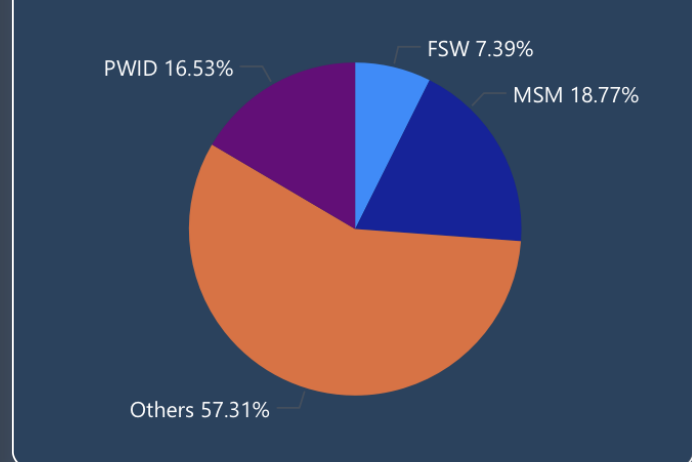


Regimen Detail	1stRegimen	2ndRegimen
1c. TDF/3TC/EFV (400 mg)	418	
2a. AZT/3TC/LPV/r		5
2b. AZT/3TC/ATV/r		2
ABC/3TC/DTG	10	1
ABC/3TC/EFV	4	
ABC/3TC/LPV/r		1
AZT/3TC/DTG	6	
TDF/3TC/DTG	757	
Total	1,195	9

Current on ART by Age Range



Current on ART by Target Group





HIV/TB Agency, Information and Services Activity

THANK YOU.