



**USAID**  
FROM THE AMERICAN PEOPLE



HIV/TB Agency, Information and Services Activity

# Engagement of communities and civil society to end tuberculosis

**Dr. Htet Myet Win Maung**  
M.B.,B.S, Dip.Med.Sc (TB & Chest)  
MPH, PhD (Epidemiology)

28.7.2023





**USAID**  
FROM THE AMERICAN PEOPLE



---

## HIV/TB Agency, Information and Services Activity

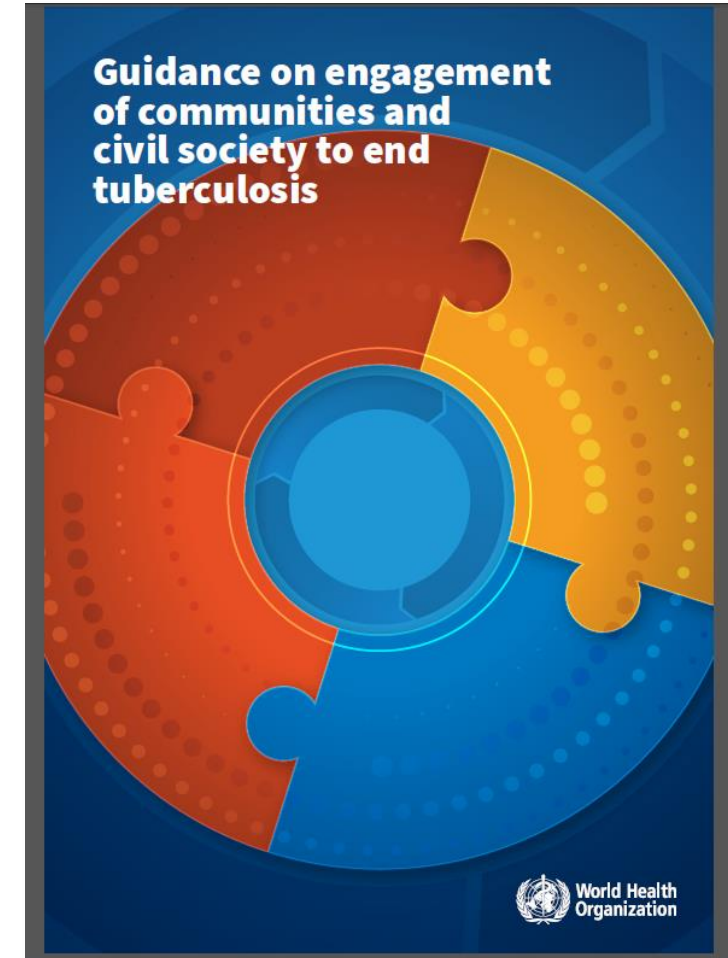
# Outlines

1. **Guidance on engagement of community and civil society to end tuberculosis**
2. **Key Definitions**
3. **Levels of community engagement**
4. **Community (Formal & Informal) involvement in AIS TB project**
5. **How can meaningful engagement be measured?**
6. **Summaries key observations from the evaluation on six high-burden countries**

# Guidance on engagement of community and civil society to end tuberculosis

- ❖ We are at **a critical juncture** in the fight to end tuberculosis.
- ❖ **Decades of progress have been reversed** by the impact of the **COVID-19** pandemic, compounded by other major challenges, including chronic underfunding of the global tuberculosis (TB) response and insufficient action on the social determinants of TB.
- ❖ This guidance recognizes **the special synergy of communities and health systems** when they work together in the fight against TB.
- ❖ We thank all people who are engaged in the fight to end TB. **No one stakeholder can do it alone.**

(Dr Tedros Adhanom Ghebreyesus  
Director-General, World Health Organization)



# Role of civil society and communities in The End TB Strategy



**Ensuring strong and meaningful engagement of civil society and communities affected by TB in the planning, implementation, monitoring and evaluation of the tuberculosis response, within and beyond the health sector.**



# Key Definitions

## Community:

- ❖ Usually defined as **a local geographical subset of society**; can also be defined by **commonalities** such as norms religion, shared interests, customs, values and needs of citizens

## Person affected by TB:

- ❖ Refers to any **person with TB disease** or who **previously had TB disease**, as well as their **caregivers** and immediate **family members**, and members of **key and vulnerable populations**, such as **children, health-care workers, PLHIV, PWUD, miners, migrant populations, women and the urban and rural poor.**



# Key Definitions

## Meaningful engagement:

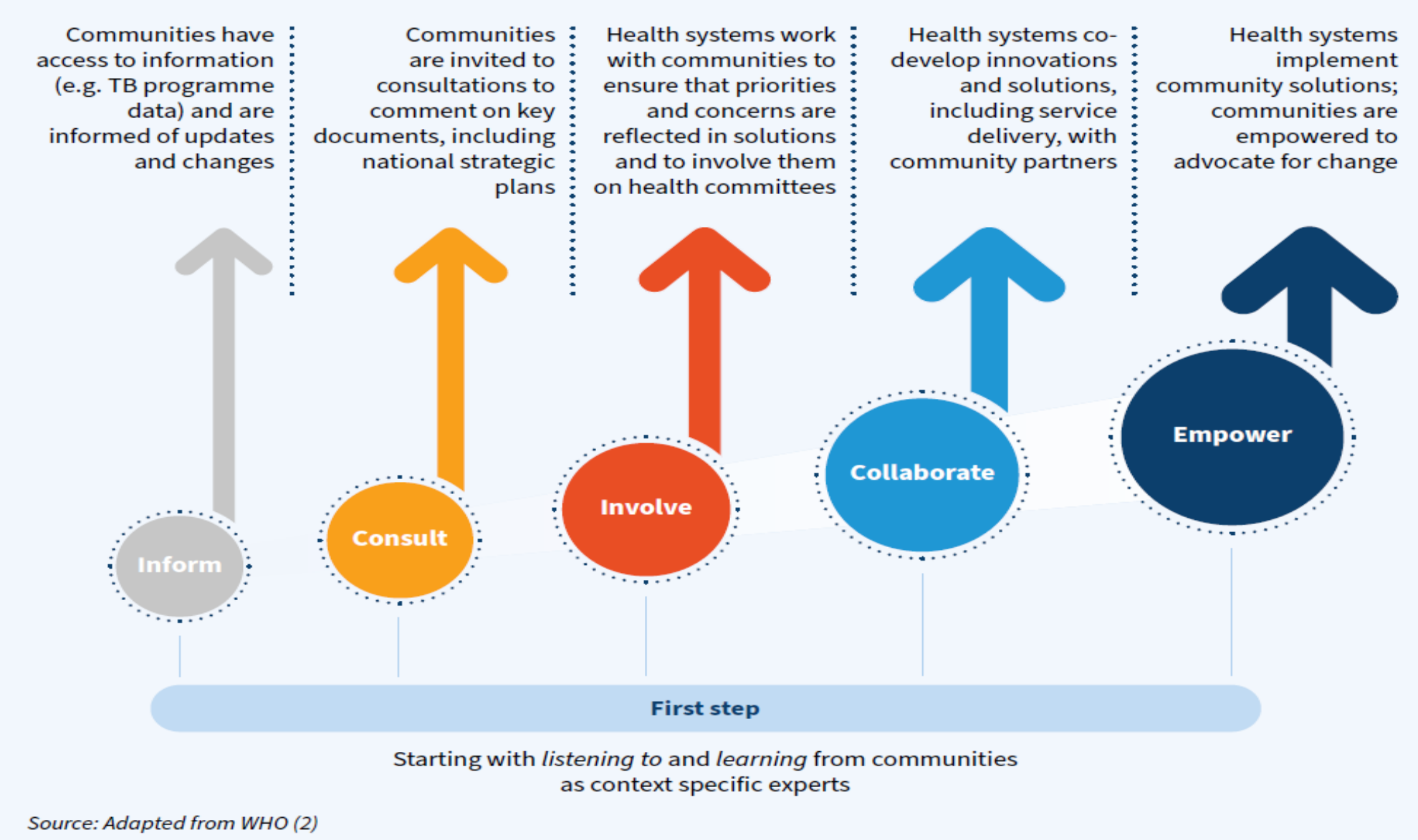
- ❖ Engagement with communities as **equal partners**, including information about the needs and services related to local issues, to **empower them as leaders** in identifying problems and co-creating solutions to a specific challenge, such as TB

## Community engagement:

- ❖ The process of **developing relationships that enable stakeholders** to work together to address health-related issues and promote well-being to achieve positive health impacts and outcomes in the community



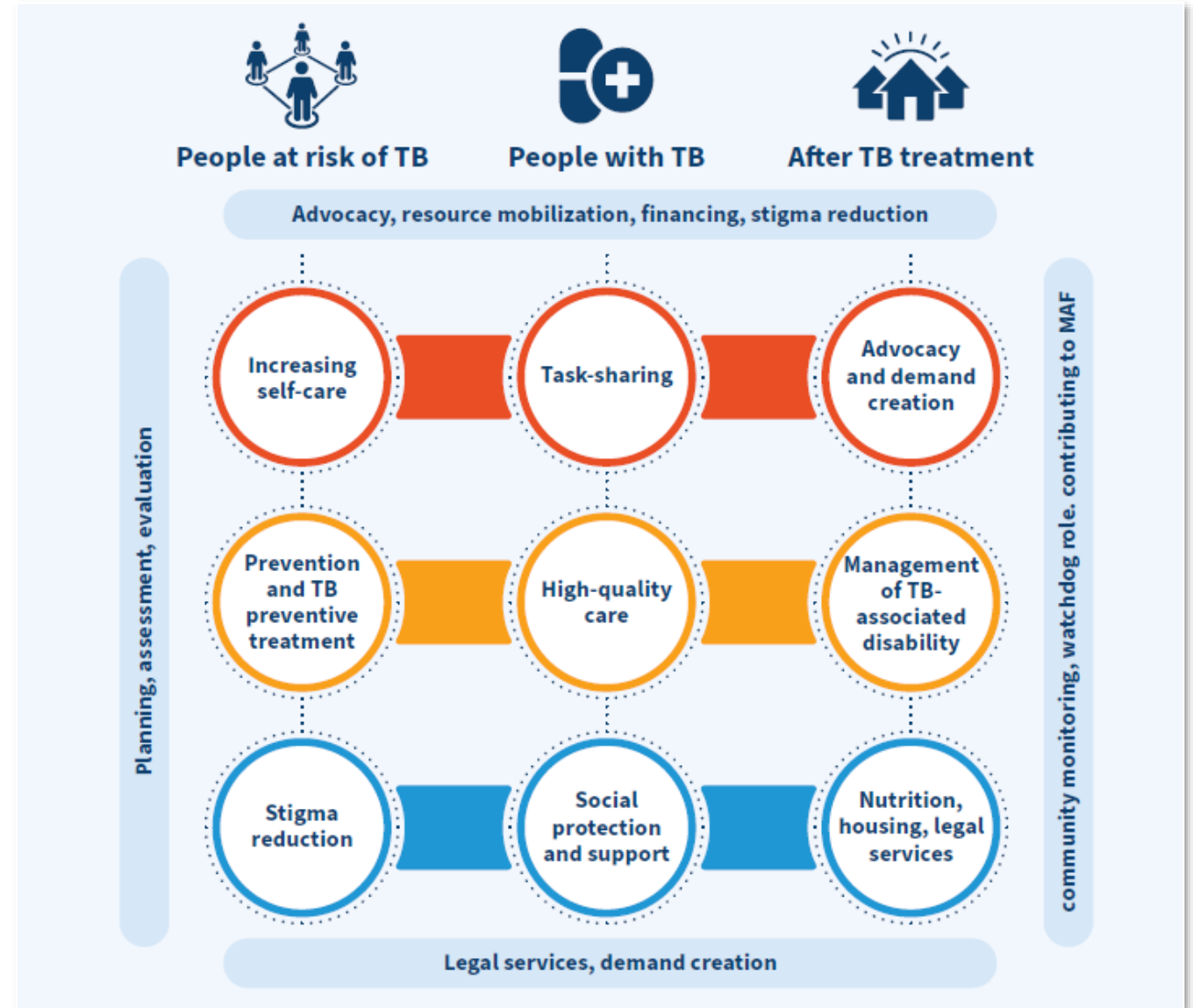
# Levels of community engagement





# Thematic areas for community action along the TB pathway

- ❖ Community contributions in service delivery include activities before and after TB diagnosis and treatment, such as **promotive, preventive, curative and rehabilitative services and palliative care.**
- ❖ Communities should contribute to **planning, assessment, research, monitoring, and evaluation.**



# Partners in the “one system” to end TB



# Community (Formal & Informal) involvement in AIS TB project

**Community Based TB Care (CBTBC)**

Health Education

Presumptive TB referral

DOT

**TB Self Help Group (SHG)**

Health Education

Presumptive TB referral

Supportive activities for local community and TB patients

**Charity clinic**

Linkage with NGOs

Health Education

TB case finding and referral



# Community (Formal & Informal) involvement in AIS TB project

**Drug Sellers**

**Linkage with INGOs**

**Health Education**

**TB case finding and referral**

**Fixed TB clinics**

**Strengthen community linkage in TB care**

**Supportive activities for local community and TB patients**

**ACF TB mobile team**

**Strengthen community linkage in TB care**

**Supportive activities for local community and TB patients**





# Community (Formal & Informal) involvement in AIS TB project

**Contact Investigation & TB Preventive Therapy**

Linkage between health care provider and family members

Health Education

TB case finding and referral for TPT

**Digital Adherence Tool (VOT)**

Improve treatment outcome and adherence

Health Education

**TB Awareness Raising**

Health Education

ACSM

Awareness raising campaign in WTBD



# Capacity Building for Community in AIS TB project

Training for CBTBC

Knowledge & Experience sharing on TB SHG

Next Generation Fellowship Program

AIS Learning Platform & Community of Practice



AIS Admin  
11 May 2023 | 12:48

Community Of Practice Sharing Session On Road To End TB Together By Finding Missing TB Cases

CoP Sharing Session for Road to End TB Together by Finding Missing TB Cases

<https://vimeo.com/825754136?share-copy-01-Screen-For-All-Implementation-GuideDownload-02-CXR-CAD-Operations>



# Community (Formal & Informal) involvement in TB cases finding and case holding within AIS TB project (FY23)

**Presumptive  
TB identified**

**(~ 12,700)**

**Presumptive  
TB tested**

**(~ 12,000)**

**Notified DS-  
TB cases**

**(~ 2,300)**

**Treatment  
Success Rate**

**(86%)\***

\* Treatment outcome related with CHW (FY22 cohort)

## How can meaningful engagement be measured?

**Indicator 1**

**Referrals and new notifications**

**Indicator 2**

**Treatment success**

**Indicator 3**

**Community representation in national decision making**

**Indicator 4**

**Level of committed funding for community engagement in the TB response at national level**

# Summaries key observations from the evaluation on six high-burden countries\*\*:

## Key finding: progress in community engagement:

- ❖ **Community contributions to TB notification**
- ❖ **Successful treatment of people who received community support for adherence to treatment**
- ❖ **Number of health centres that engaged communities in referring people with TB symptoms**

## Challenges:

- ❖ **Lack of a sustainable, systemic approach to community engagement;**
- ❖ **Insufficient investment in community system development;**
- ❖ **Weak institutional and managerial capacity of community networks/organizations**
- ❖ **Insufficient indicators to track community engagement beyond service delivery**
- ❖ **Insufficient use of community-related data for programme planning.**

# Summaries key observations from the evaluation on six high-burden countries\*\*:

## Way forward:

- ❖ Sustainable system approach to community engagement aligned with global health priorities
- ❖ Enabling environment, including sustainable financing for community engagement;
- ❖ Meaningful engagement with the full spectrum of community engagement;
- ❖ Capacity-building in communities and civil society
- ❖ Indicators to track meaningful engagement of civil society and communities beyond service delivery.

\*\*The evaluation included a desk review of data on communities and TB provided annually by Member States, an in-depth desk review of information on six high-burden countries, and interviews with stakeholders.



HIV/TB Agency, Information and Services Activity

**THANK  
YOU.**