

Speaker's Profile



Dr. Linn Htet

HIV Technical Lead at Community Partners International (AIS)

Dr. Linn Htet is a medical doctor holding a Master's degree in Public Health from the University of Bedfordshire, UK, and has almost two decades of experience in the field of HIV.

He has been working as HIV Technical Lead with AIS/CPI. He is the strategic technical lead for the AIS project, providing strategic directions and technical assistance to AIS partners & local KP-led organizations.

He also worked as Technical Director with FHI360's EpiC project in Myanmar for 1.5 years. He has 12 years of experience working with MSF-Holland in several positions, focusing on HIV/TB/MDR-TB, and more than five years in PSI, MAM, and CPI.

Speaking Topic – AIS Funded Virtual HIV Services & expected outcomes



USAID
FROM THE AMERICAN PEOPLE



HIV/TB Agency, Information and Services Activity



USAID
FROM THE AMERICAN PEOPLE



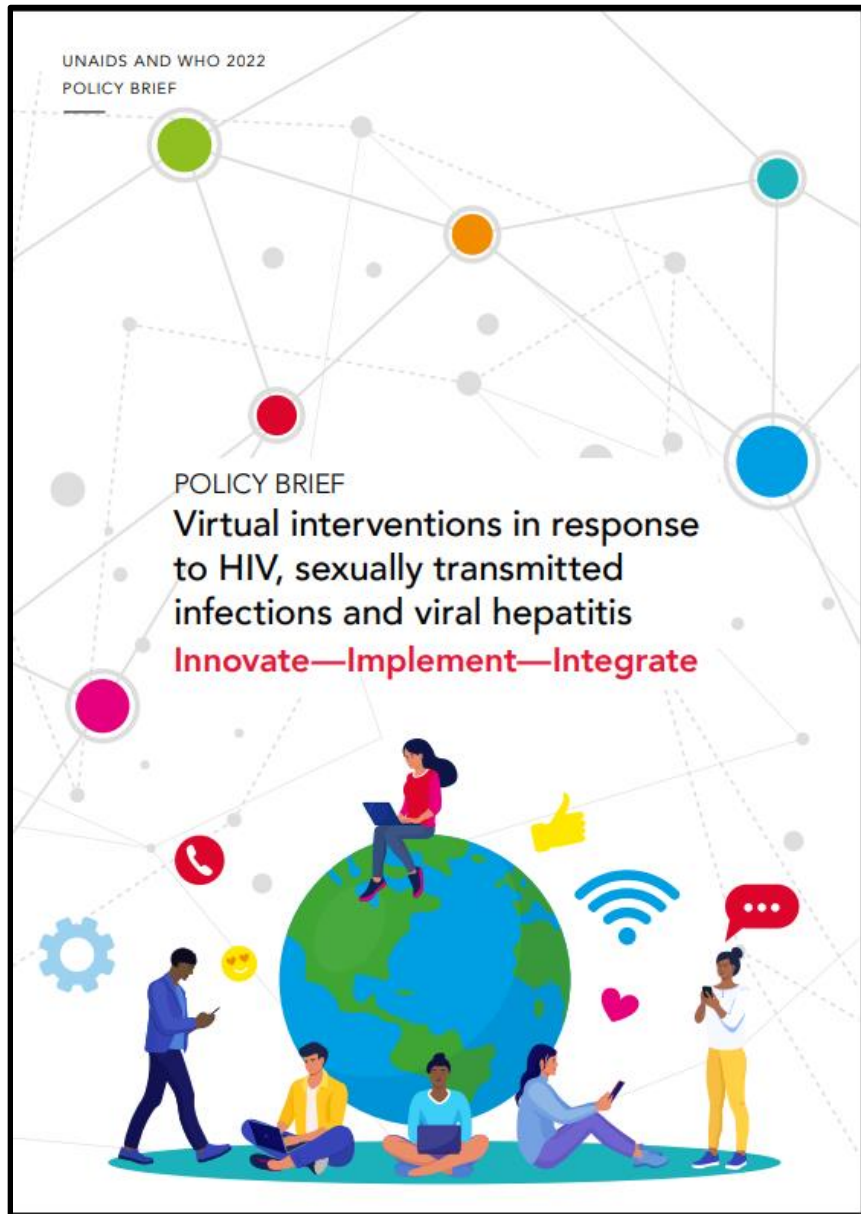
HIV/TB Agency, Information and Services Activity

AIS Funded Virtual HIV services & Expected Outcomes

Linn Htet
HIV Technical Lead

28 Apr 2023





Why Online Outreach?

- ❑ Expand outreach for KPs unreached through traditional services
- ❑ Growing number of KPs who use the internet and prefer services using virtually
- ❑ Focusing promotion and demand-creation efforts on KPs who may benefit from them
- ❑ Providing new options that better meet the preferences of KPs
- ❑ Improving the efficiency of service delivery and conserving clinic capacity by reducing clinic visits
- ❑ Mitigating service disruptions in COVID-19 and other potential security threats among KPs

SERVING THE NEEDS OF KEY POPULATIONS:
**CASE EXAMPLES OF INNOVATION
AND GOOD PRACTICE IN HIV
PREVENTION, DIAGNOSIS,
TREATMENT AND CARE**

JUNE 2017

KEY POPULATIONS



Online communications

- Reach marginalized populations
- Share information in a discreet and confidential way
- Preserve anonymity
- Promote the uptake of services and support adherence to treatment
- Effective for young KPs and KPs criminalized and vulnerable to discrimination and abuse.

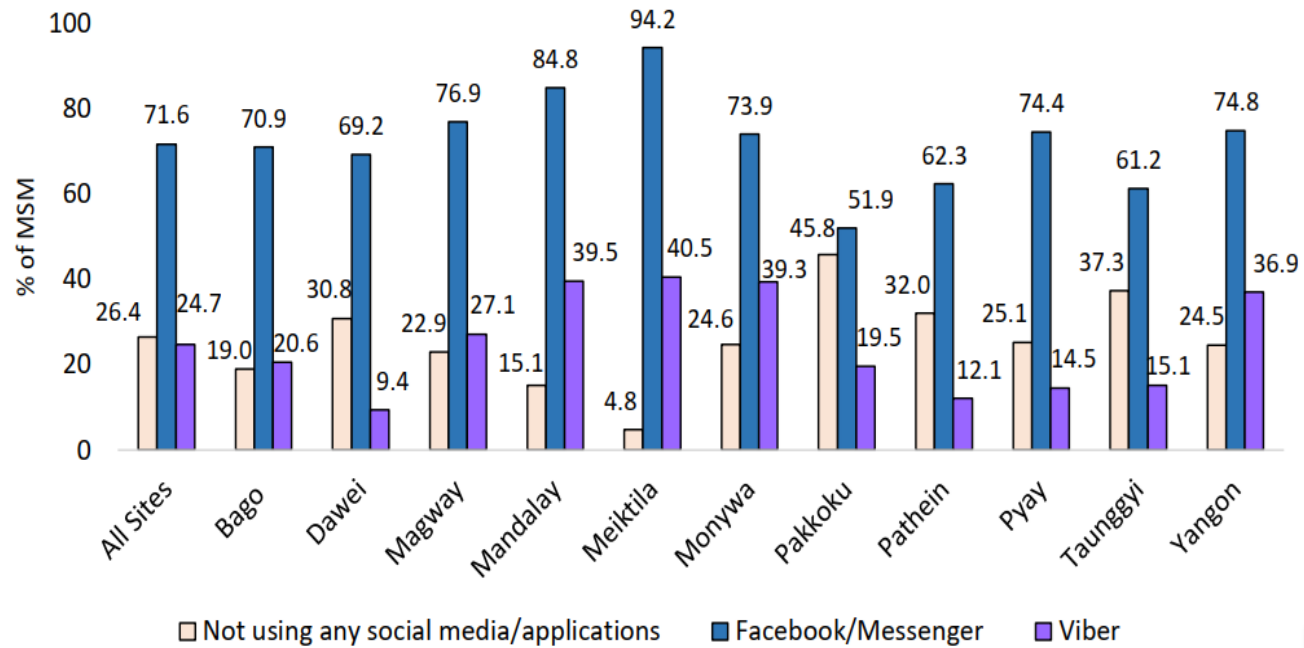
FY 2024 Technical Considerations



PEPFAR
20 YEARS OF IMPACT

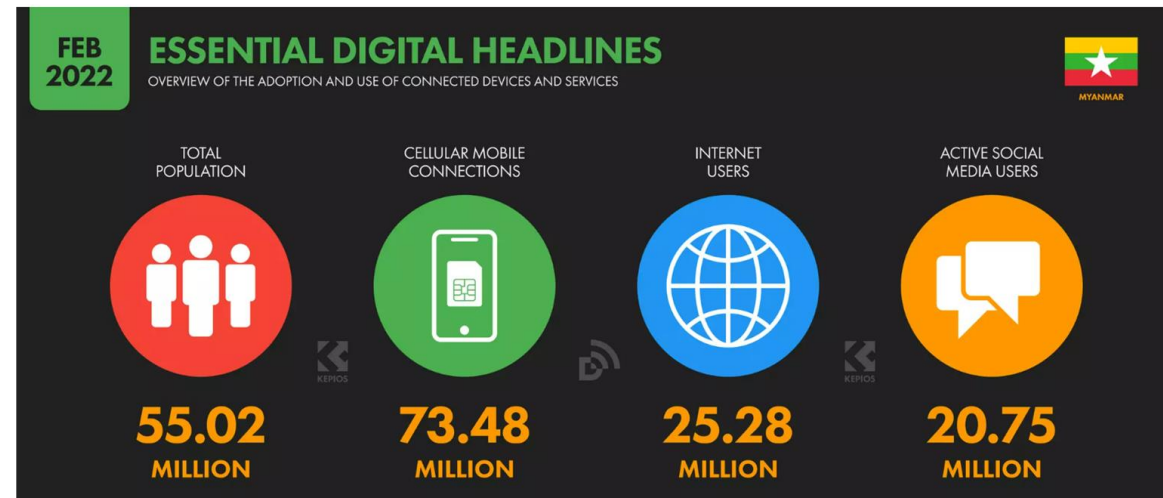
- Utilize social media and other ICT platforms to reach KPs reluctant/unable to access services because of stigma, preference for virtual service, COVID-19, and security threats
- Utilize virtual approaches by peer workers, and case managers to complement standard venue-based services to access undiagnosed sub-populations of KPs
- Provide general education, risk screening, booking for testing via online methods and referring for community and facility testing, and other optimized testing approaches including SNS, index testing, RNR, and HIVST
- Continue support through referral follow-up, appointment reminders and management, treatment literacy, adherence support, and overall case management
- Tracking and reporting services along the cascade to assess the impact, use for decision-making, and ensure linkage to a full range of quality HIV services.

Myanmar Integrated Biological and Behavioural Survey Among Men Who Have Sex With Men 2019



^aOverall, 3 participants did not answer

^bMultiple choices possible; figure displays three most commonly reported in combined (all sites) analysis

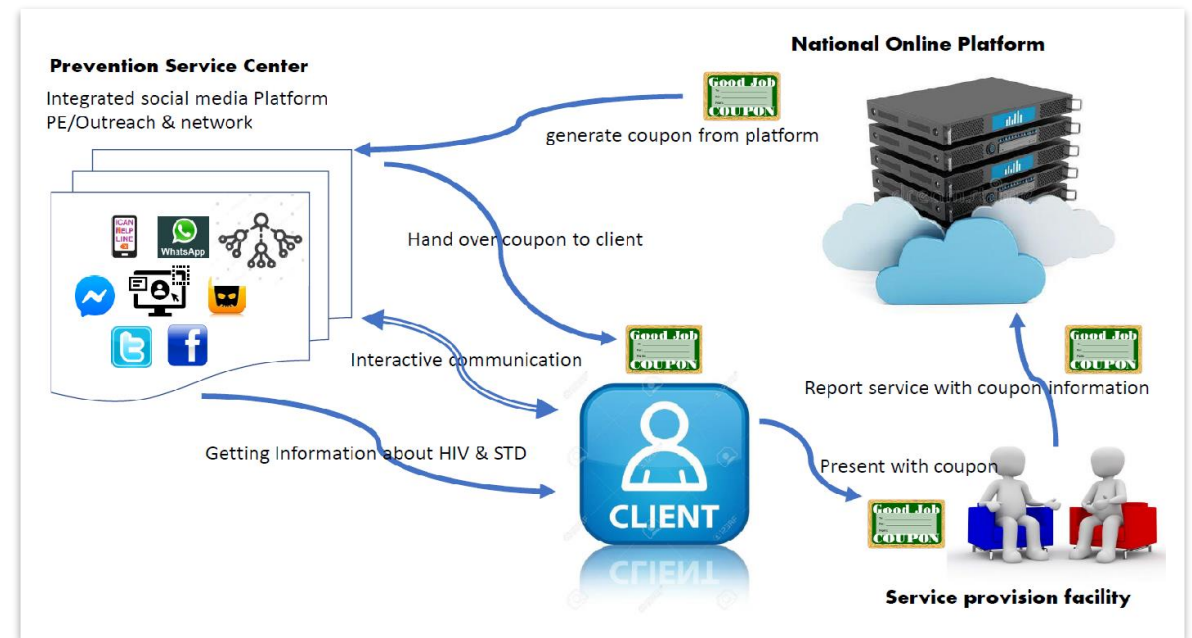


Myanmar NSP IV

Innovative prevention activities tailored to each of the KP groups and regions.

Adapted online information and access to services using

- Online and hotline platforms for risk assessment and referral
- Social media applications
- Assisted partner notification
- Self-testing and PrEP



AIS HIV Communication Strategy

ADVOCACY AND NETWORKING

- Regular stakeholder coordination meetings
- Work with KP-led local CSOs, networks and other IPs driving demand creation & referral networking
- Advocacy for DSD models and expansion of community-led services

ONLINE AND SOCIAL MEDIA INTERVENTIONS

- Implement and support social media interventions and media awareness campaigns
- Social media engagement to broadcast information, and advice, identify potential clients and build and maintain an online community of KPs
- ORA for PrEP and HIVST

HIV Communication Strategy

IEC AND MASS MEDIA

- Pamphlets, posters, job aids, flipcharts
- Engage media outlets TV, FM radio, magazines, and journals to cover campaigns and intervention launches
- Media engagement for HIV services (interviews, Q&A sessions with partners)

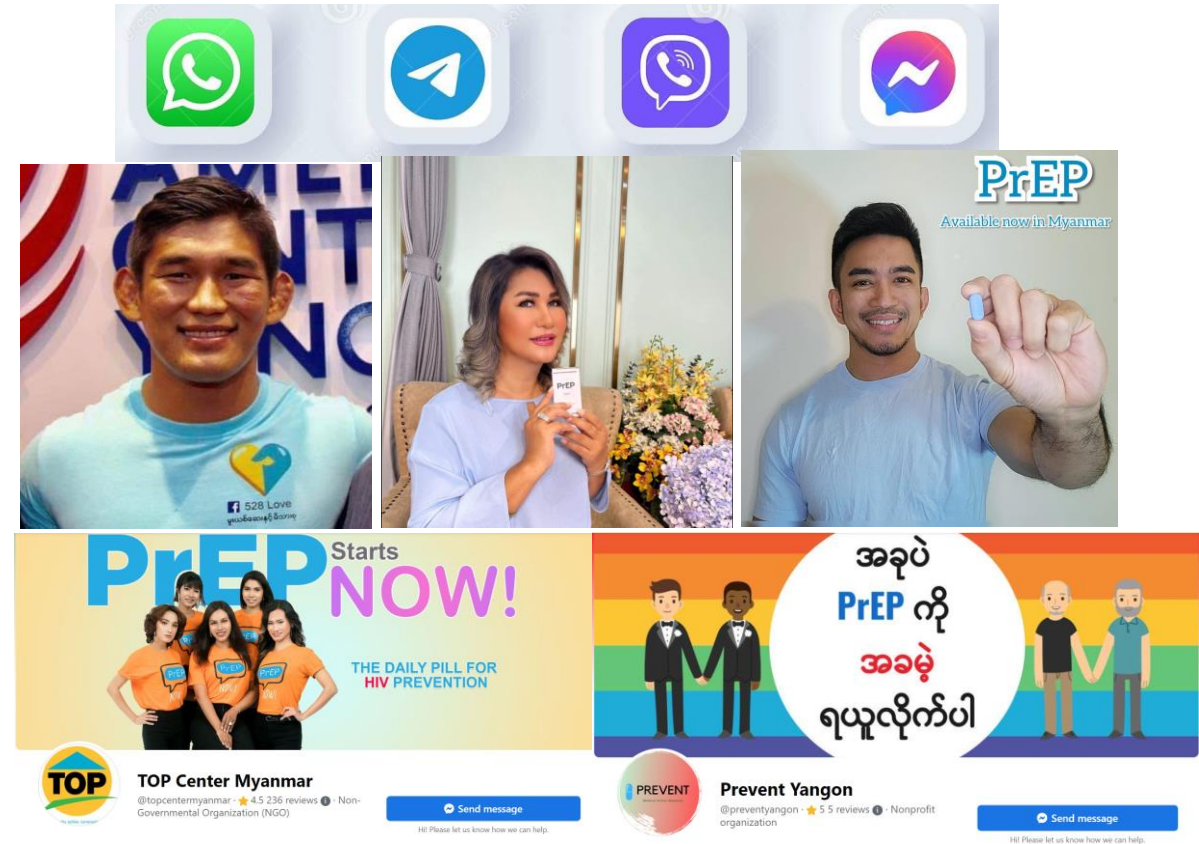
COMMUNITY MOBILIZATION, ENGAGEMENT, AND CAPACITY BUILDING

- Participate in Pride festivals, WAD events
- Community mobilization using social influencers, and KOL
- Organize training, conferences, and webinars on the learning platform and COP

What we have done so far?

Online Outreach

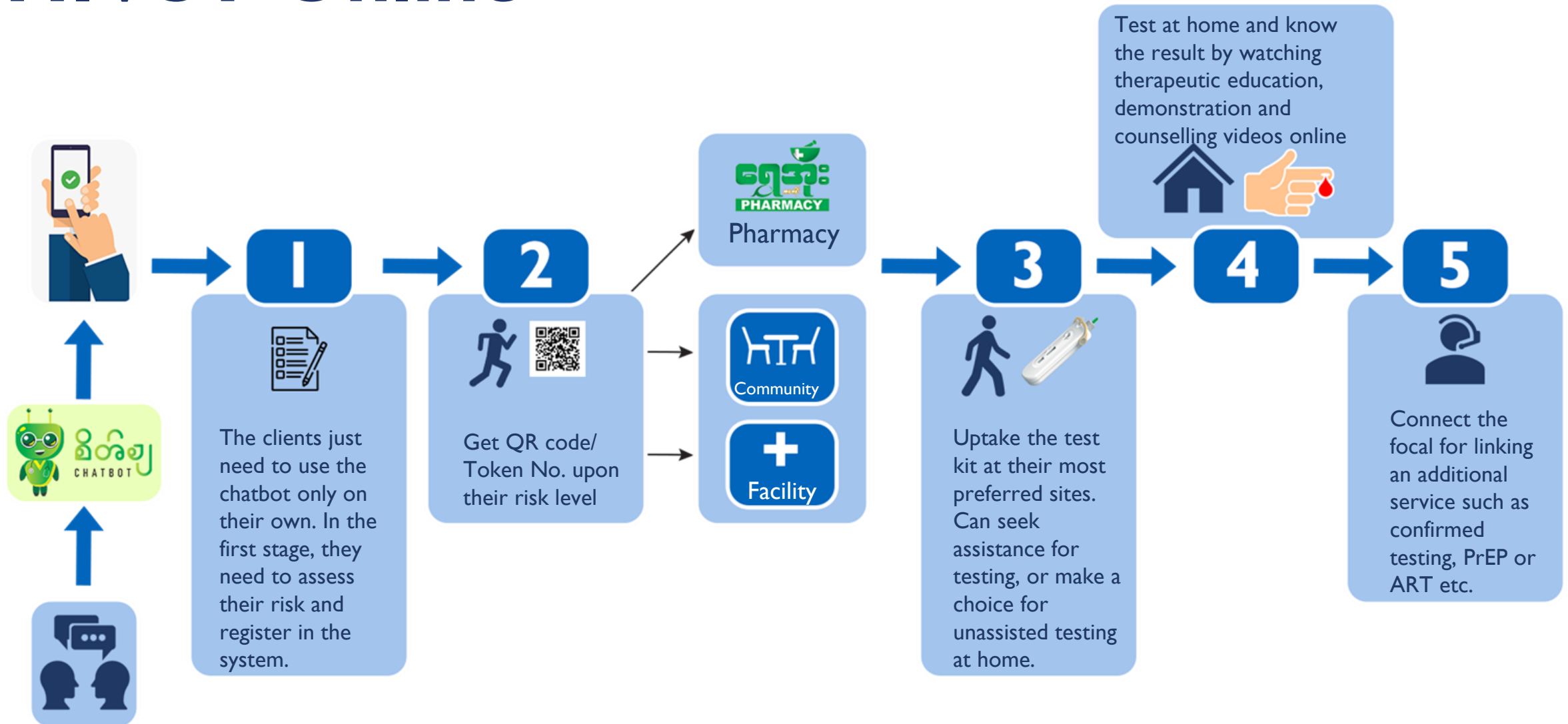
- **Social Network** – through one on one chat using virtual platforms
- **Social Influencers** – using influential, credible, and well-connected online gatekeepers as important partners
- **Social Profiles** – through social media pages of the organizations or campaigns
- **Online Reservation Applications** – self-risk assessment and online booking for HIV services



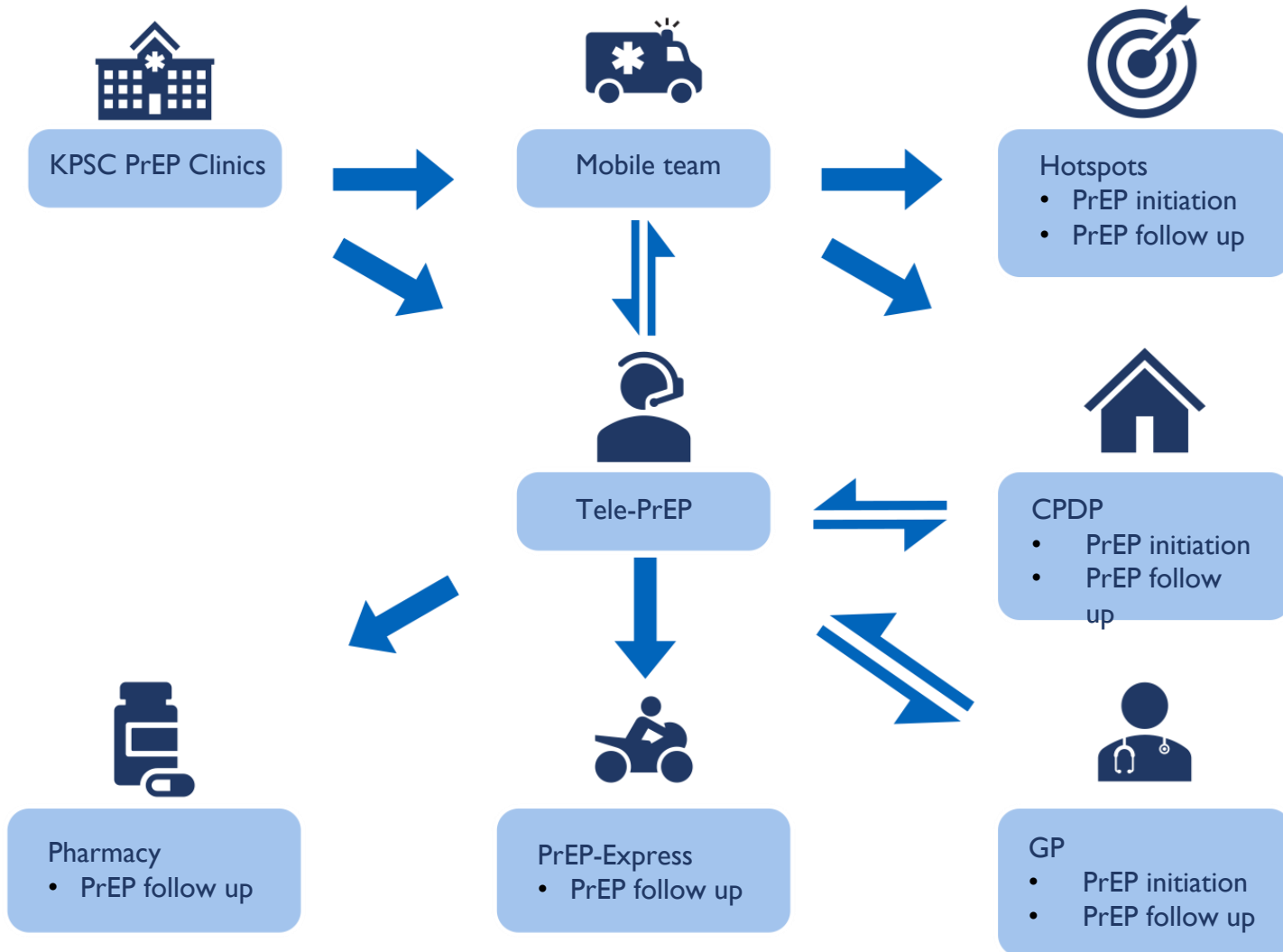
ရက်ချိန်း

What we are planning to do?

HIVST Online

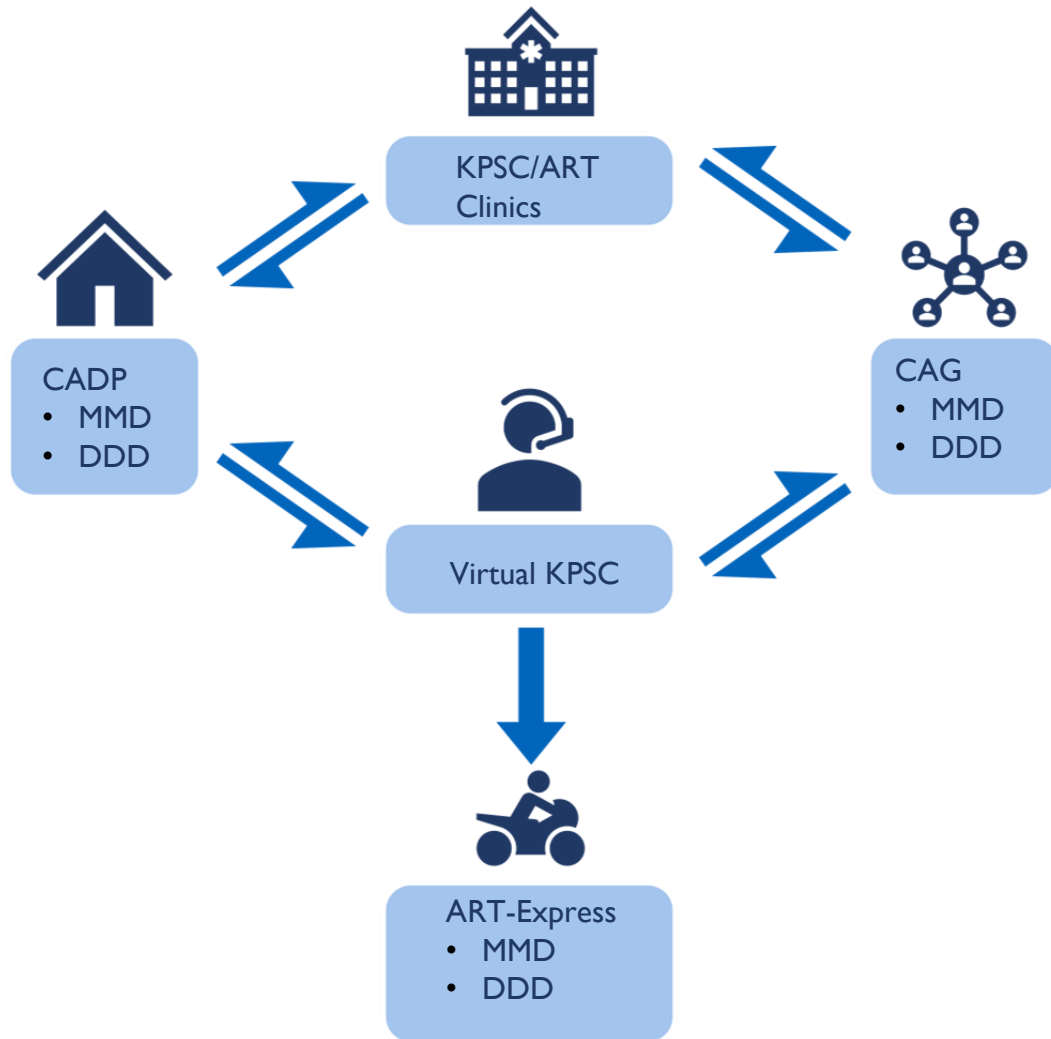


Virtual PrEP services



All PrEP users initiated with differentiated PrEP initiation (mobile, CPDP, and GPs) will have access to virtual or Tele-PrEP services including PrEP Express and Pharmacy Distribution points for easier follow-up and access to PrEP.

Virtual case management



ART clients will be linked with virtual KPSC for adherence support and counseling and mitigation for ART delivery at home or DDD in crisis situations.

Virtual KPSC

- Peer Outreach
- Enhanced Outreach
- SNS
- Social Influencers
- Social Profiles
- ORAs (QR& SateCha)
- Hotlines
- Private Sector Engagement

Entry

Prevention and Testing

- HE/SBC
- Refer to prevention commodities
- Refer for PrEP services
- Refer for HIV/STI screening and treatment (O2O)
- Referral for HIVST online (SateCha)
- Referral for CBS and mobile clinics
- Online/Hotline Counseling

Virtual Case Management

- Linkage online to offline HIV services
- Tracking MA & LTF and re-engagement for Pre-ART, ART & PrEP
- Consultation & Counseling including MHPSS
- Adherence support and case management
- Referral & tracking of follow-up lab tests and VL
- U=U messaging for VLS

Differentiated Drug Distribution

- Satellite Sites
- DC sites
- Mobile clinic
- CADP
- CAG
- Delivery

PrEP offer
Tele Prep & PrEP Xpress

PrEP clinic, CPDP,
Mobile

PrEP initiation
Investigation

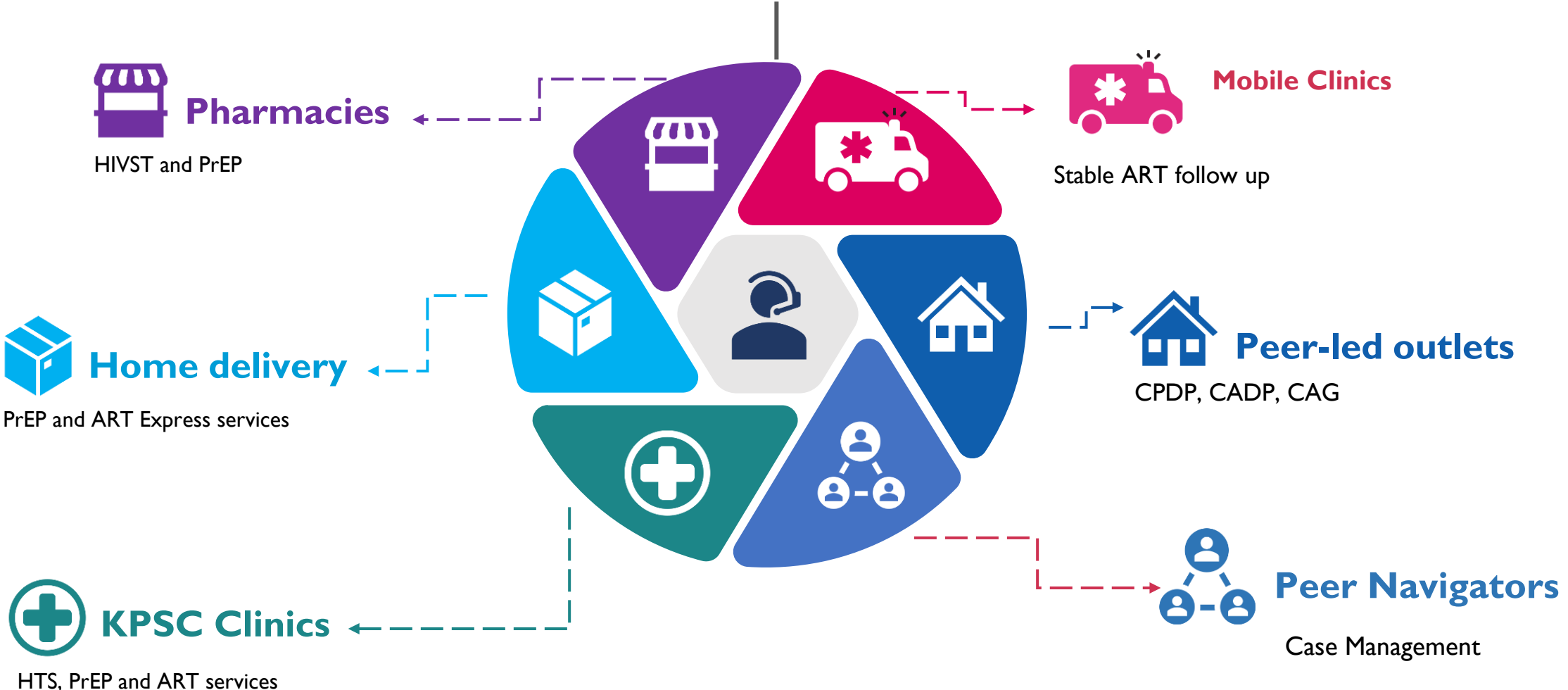
(-)

(+)

ART initiation
Investigation

Satellite, DC
sites

Virtual KPSC





USAID
FROM THE AMERICAN PEOPLE

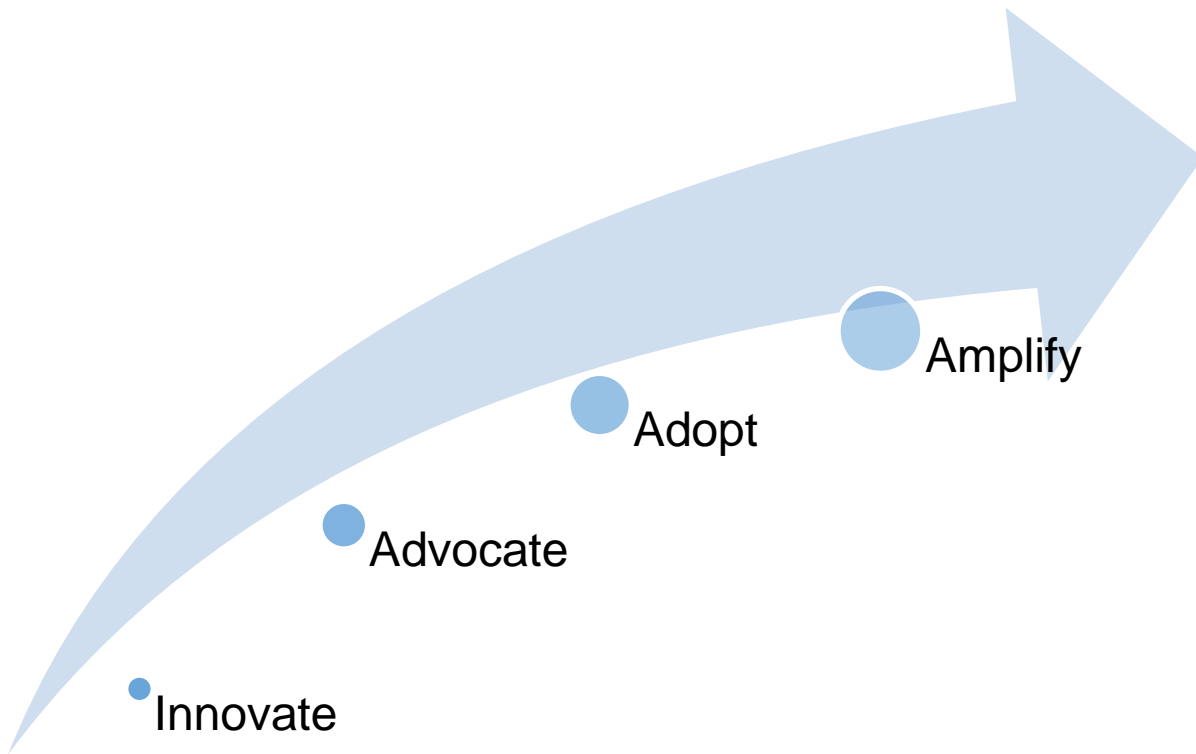


CPI COMMUNITY
PARTNERS
INTERNATIONAL

HIV/TB Agency, Information and Services Activity



HIV/TB Agency, Information and Services Activity



THANK YOU.