

Speaker's Profile



Dr. Linn Htet

HIV Technical Lead at Community Partners International (AIS)

Dr. Linn Htet is a medical doctor holding a Master's degree in Public Health from the University of Bedfordshire, UK, and has almost two decades of experience in the field of HIV.

He has been working as HIV Technical Lead with AIS/CPI. He is the strategic technical lead for the AIS project, providing strategic directions and technical assistance to AIS partners and local Key Populations-led organizations.

Previously, he worked as Technical Director with FHI360's EpiC project in Myanmar for one and a half years. He has 12 years of experience working with MSF-Holland in several positions, focusing on HIV/TB/MDR-TB, and more than five years in Population Service International-Myanmar, Medical Action Myanmar, and CPI.

Speaking Topic – It's time to deliver PrEP differently!



USAID
FROM THE AMERICAN PEOPLE



HIV/TB Agency, Information and Services Activity

It's time to deliver PrEP differently!

Linn Htet
HIV Technical Lead

2nd Feb 2023





USAID
FROM THE AMERICAN PEOPLE



HIV/TB Agency, Information and Services Activity

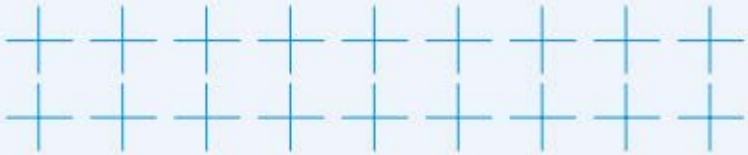
Dramatically scale-up PrEP through DSD

Optimizing convenience, choice, community engagement, and communication options



Differentiated and simplified pre-exposure prophylaxis for HIV prevention

Update to WHO implementation guidance
TECHNICAL BRIEF



Our experience

In the era of COVID and the Coup
Program adaptations in PrEP service delivery

- MMD
- HIVST for those who cannot come to follow up
- Xpress delivery of PrEP
- Setting up Community PrEP Distribution Points
- Demand Creation through Social Media Platforms
- Virtual consultation, adherence support, and counseling

End-Term Recommendations favoring DSD

- Program expansion population and geographical
- Caseload should be shared with DSD
- Flexible clinic opening days and times
- Improve clinic flows to solve the prolonged waiting time
- MMD should be scaled



PrEP Demonstration Project

END TERM EVALUATION
KEY FINDINGS

*PSI Myanmar
June 2022*



Building Block for PrEP DSD

WHEN

Monthly
Every 3 months
Every 6 months

WHERE

HIV clinic / hospital
Primary care clinic
Private clinic
Community
Home
Drop-in centre
Online consult
Courier
Pharmacy
Mobile clinic



WHEN

Monthly
Every 3 months
Every 3+ months



WHERE

KPSC
CPDP
Mobile Clinic
Private Clinic
Community
Pharmacy
Online Consult
Home
PrEP Xpress

WHO

Physician
Clinical officer
Nurse
Pharmacist
Community health worker
Patient / peer / family
Counsellor
Pharmacy staff



WHAT

PrEP initiation/refills
Clinical monitoring
Adherence support
HIV test
STI screening and treatment
HBV screening (vaccinate/treat)
HCV screening and treatment
Pregnancy test
eGFR (creatinine clearance)
Side effect monitoring and counselling
Contraception
Condoms and lubricants
Harm reduction (MAT/N&S/ATS use mitigation)
Mental health services



WHO

Medical Officer
General Practitioners
Nurse
Counselor
Community Health Workers
Pharmacy Staff
Peer Navigator

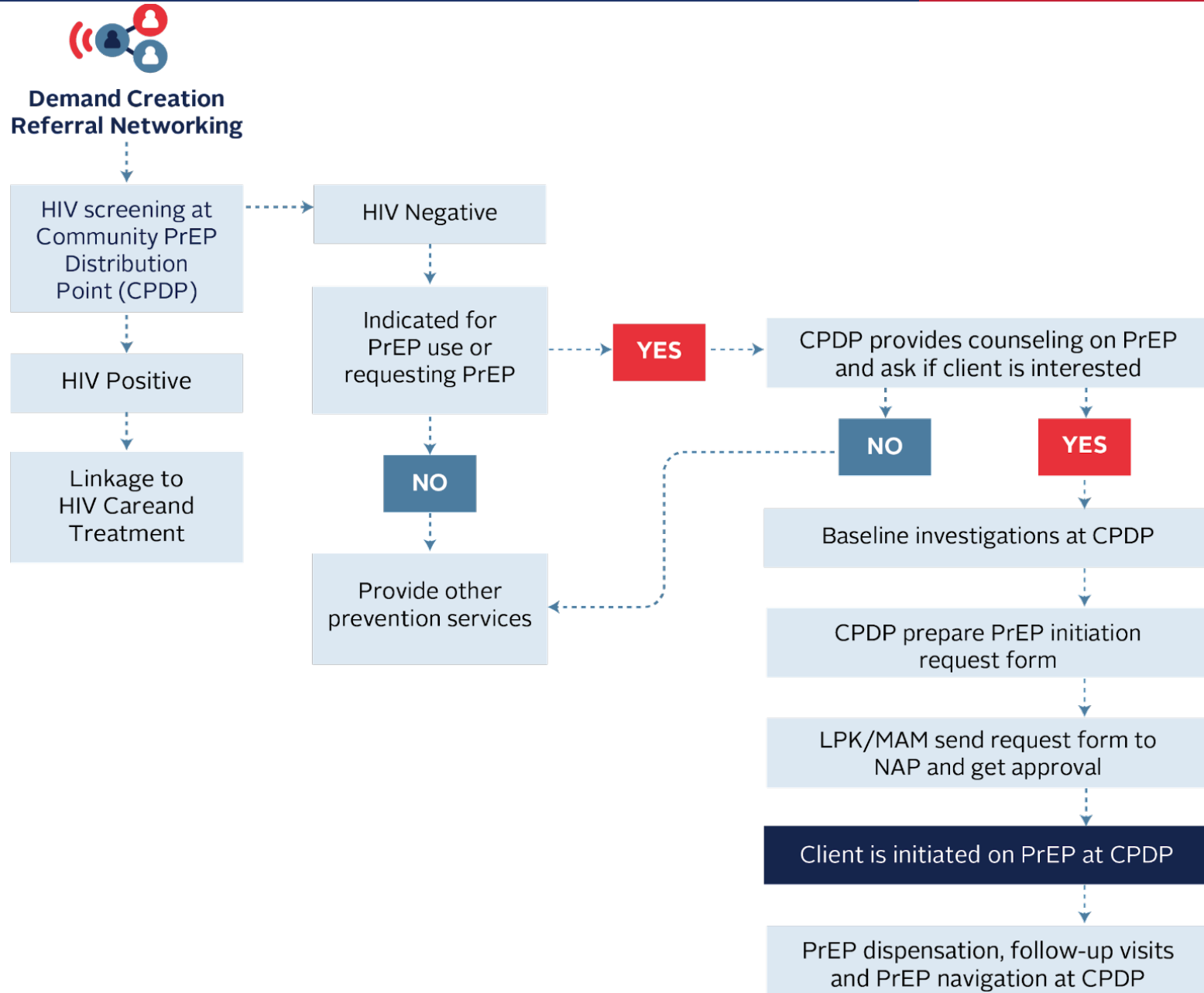
Person-Centered
PrEP DSD



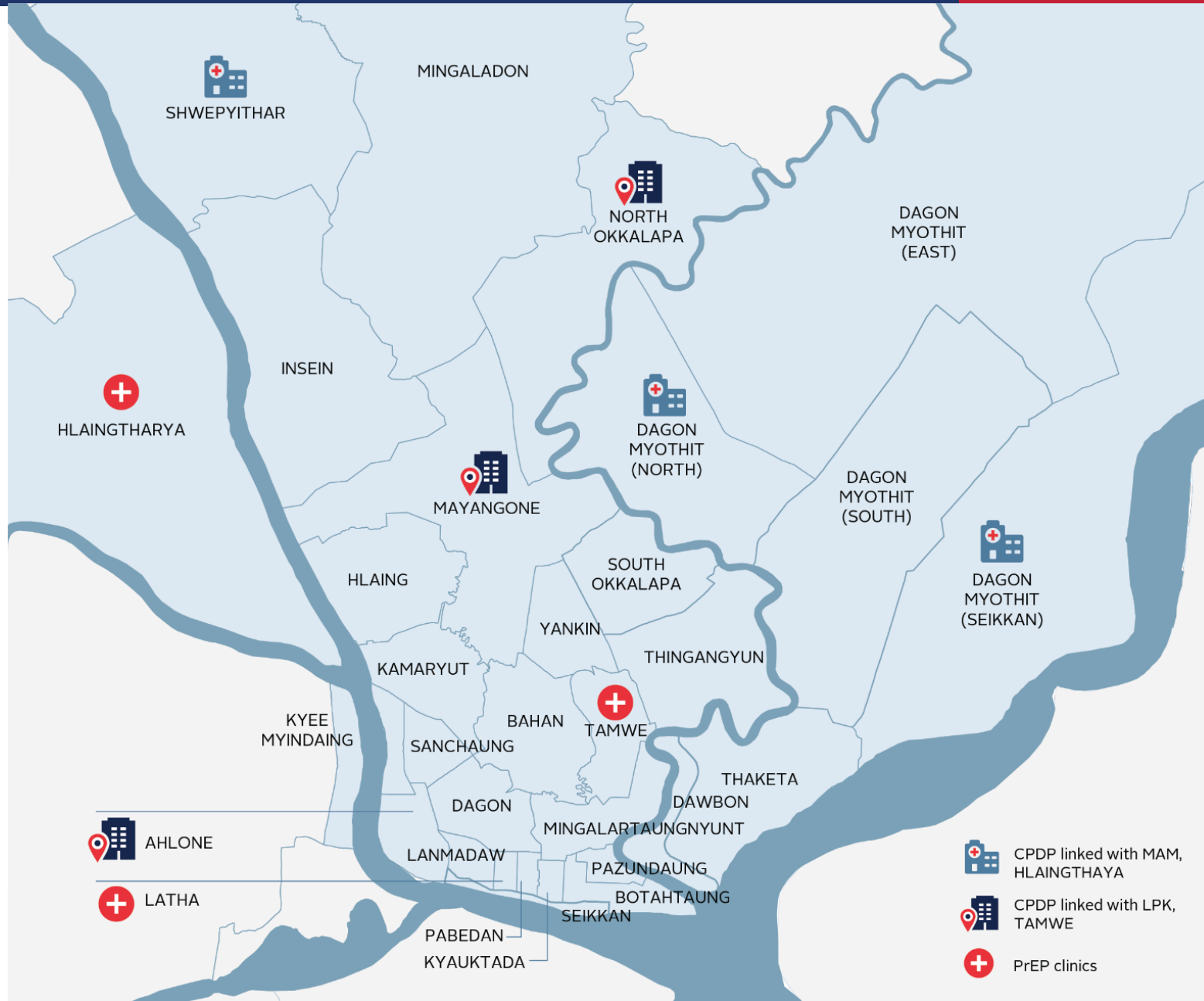
WHAT

PrEP Initiation and follow up
PrEP Follow up only
Same day PrEP
Short-term PrEP
Adherence Support
Pharmacy Distribution
Home Delivery

CPDP



CPDP





PREP DEMAND CREATION

Peer Educators

- Online and social network outreach
- PrEP awareness raising
- Networking and referral for HIV screening
- Condom & Lubricant distribution



PREP SCREENING

Nurse Counselor
PrEP Navigator
LPK/MAM Mobile team

- Risk assessment
- Screening for eligibility
- Baseline investigations
- Pre-PrEP counseling



PREP NAVIGATION AND FOLLOW UP

Nurse Counselor
PrEP Navigator
LPK/MAM Mobile team

- Follow up HIV testing
- PrEP monitoring
- PrEP drug refill
- Adherence support



COMMUNITY-BASED HIV SCREENING (CBS)

Nurse Counselor
Peer Educators
LPK/MAM Mobile team

- HIV testing
- Referral for HIV confirmation
- Referral for ART treatment



PREP INITIATION

Nurse Counselor
PrEP Navigator
LPK/MAM Mobile team

- PrEP counseling
- Drug dispensation
- Adherence support

PrEP DSD for MSM

Modality

Integration of virtual/tele-PrEP and express delivery into current PrEP model

Location

Yangon, Mandalay

By/with whom

MAM, LPK, CPDP partners

Other potential service delivery models

Pharmacy; Private general practitioner (GP) clinic

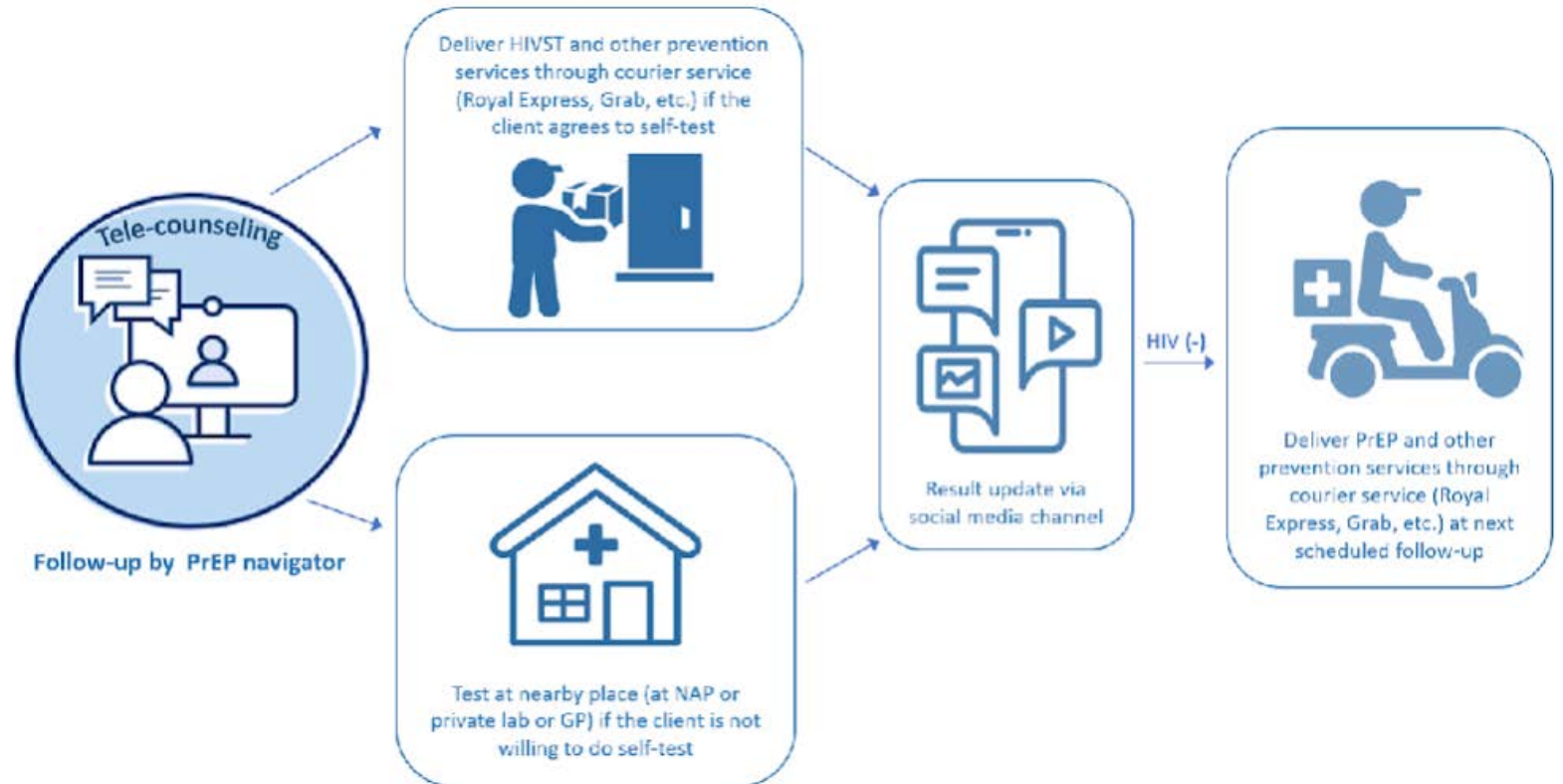


Figure 1: New mixed model of tele-PrEP with PrEP Express. © PATH

PrEP DSD for TGW

Modality:

Integration of virtual/tele-PrEP and community outreach model

Location:

Yangon, Mandalay

By/with whom:

MAM, LPK, CPDP partners

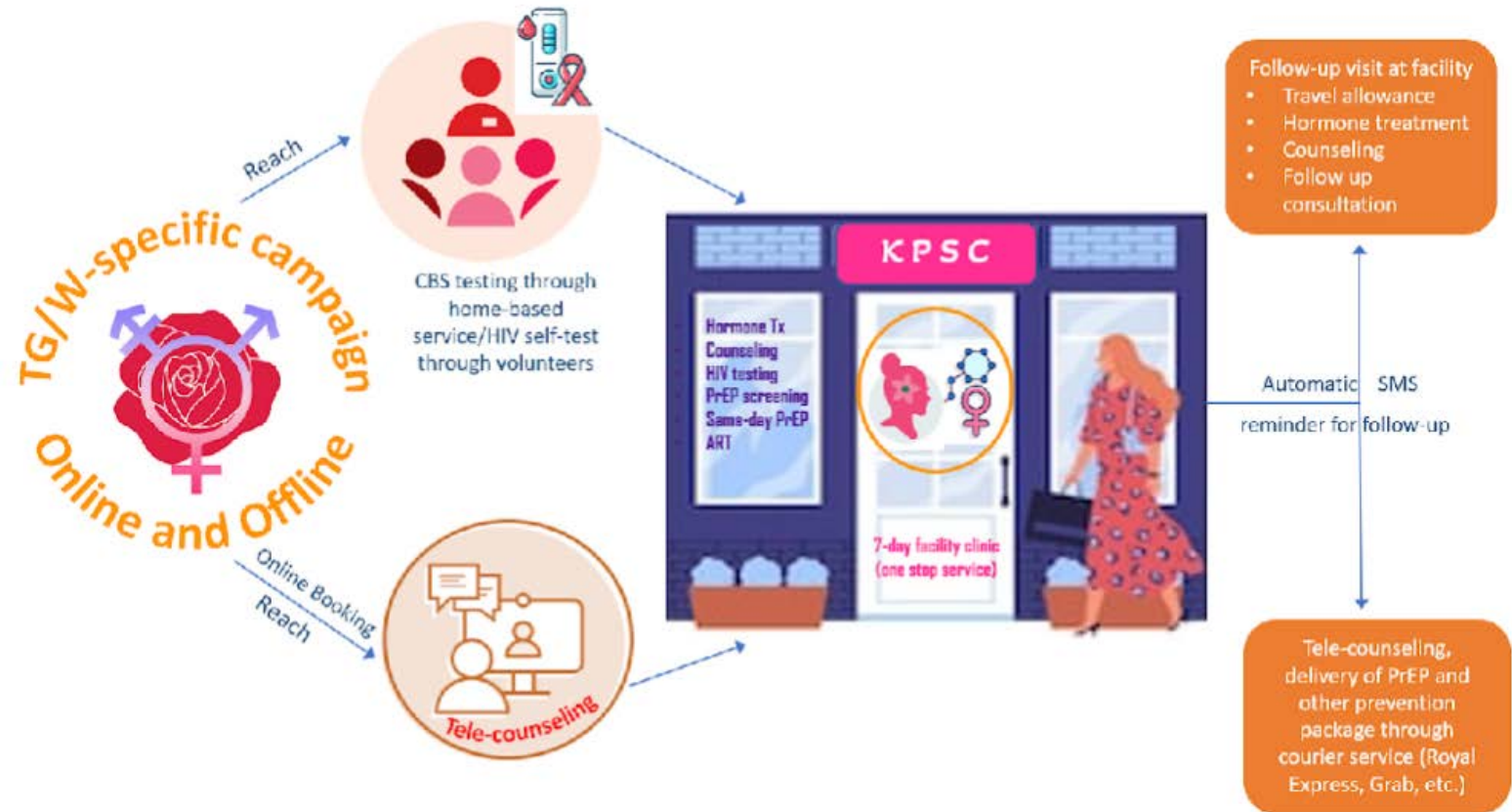


Figure 2: New tele-counseling and KPSC model with trans-competent and gender-affirming services. © PATH

PrEP DSD for FSW

Modality: Community-based outreach model (integrated with mobile PrEP and facility-based model); They will also adopt CPDP model in close collaboration with MSM and TGW team.

Location:

Yangon, Mandalay, Meiktila

By/with whom:

Yangon: MAM, LPK, SWIM, AMA, Phoenix;
Mandalay: LPK, Yin Khat Pan, Metta Yin Khwin and Nya Hmway Pan

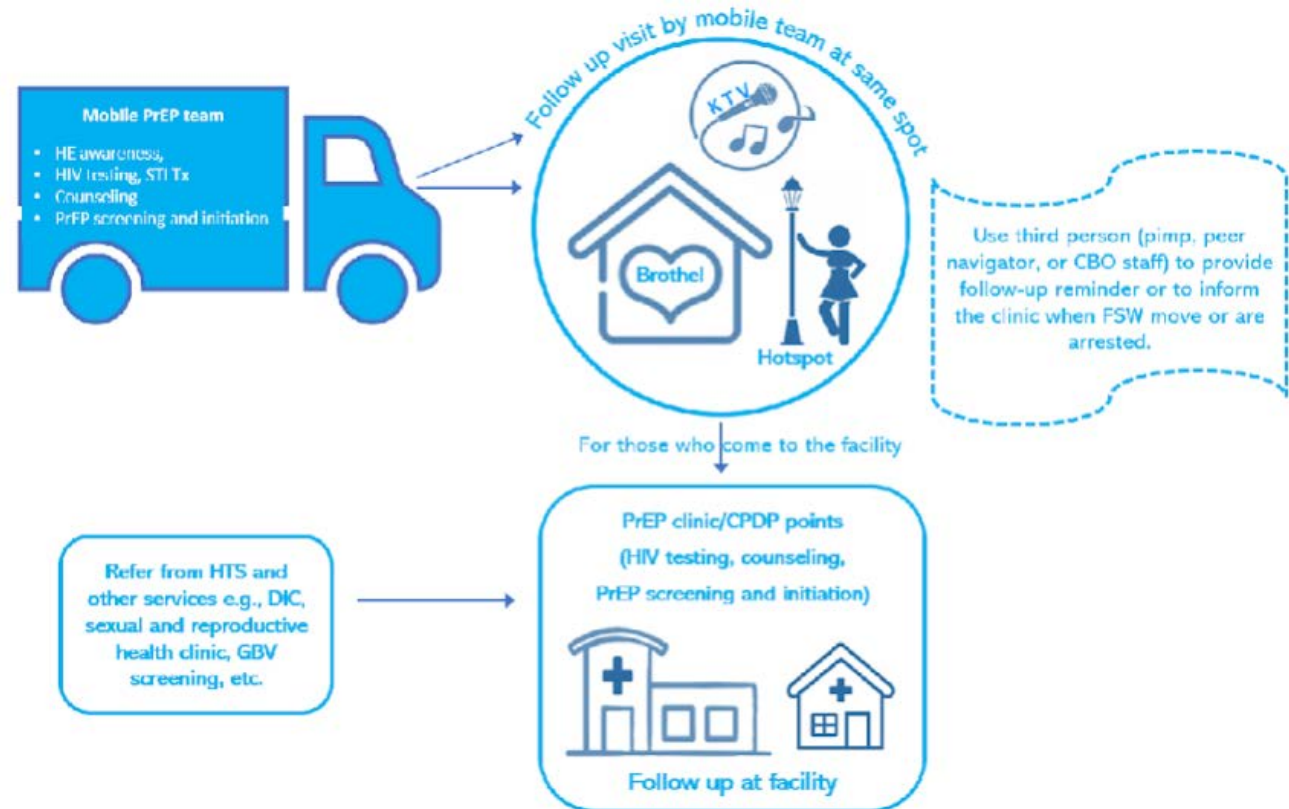


Figure 3: New PrEP-on-Wheels model. © PATH

PrEP DSD for PW ID

Modality: Facility-based, mobile team, and community-based service delivery models

Location: Waing Maw, Lashio

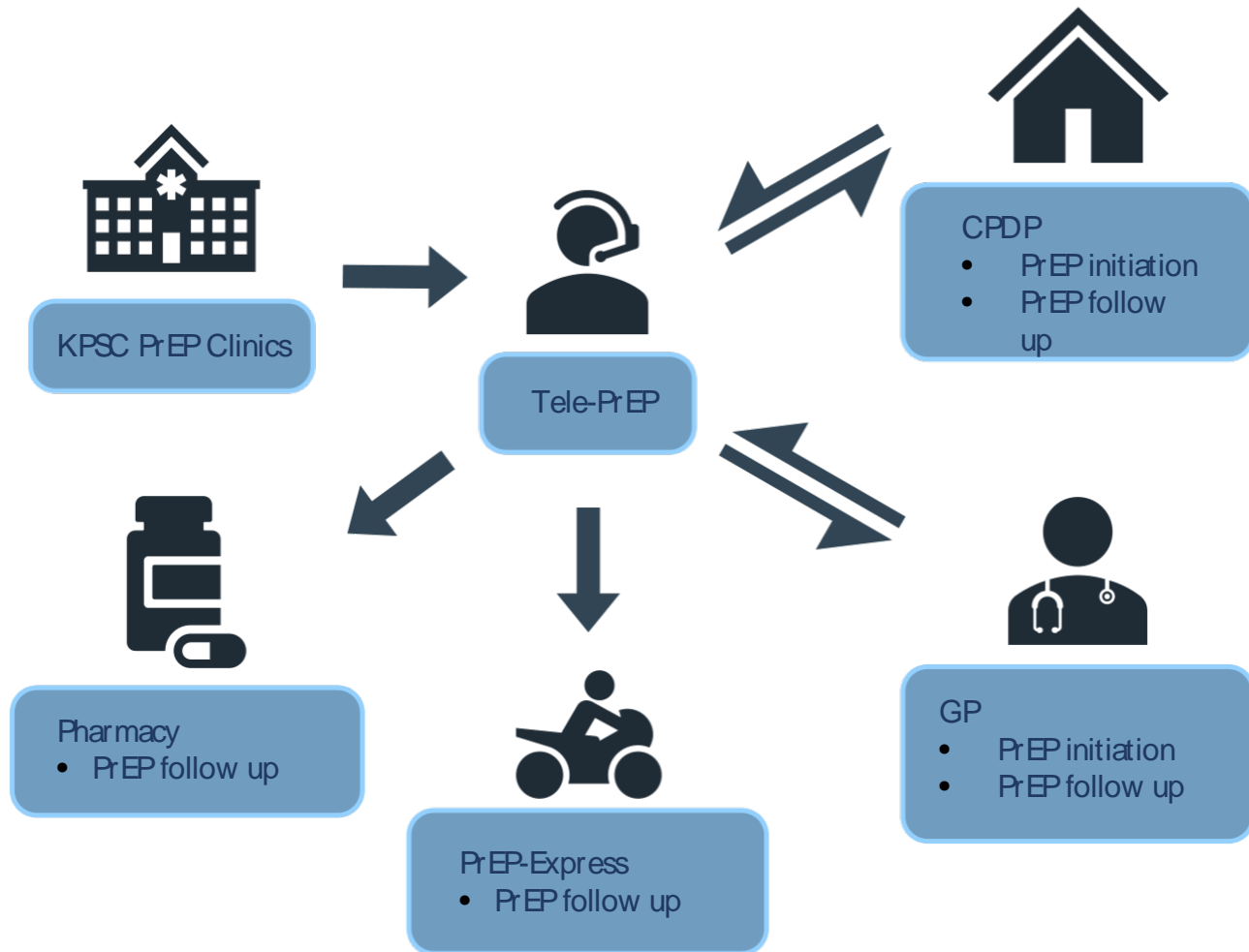
By/with whom: AHRN and Best Shelter



Figure 4: New PrEP-on-Wheels model © PATH

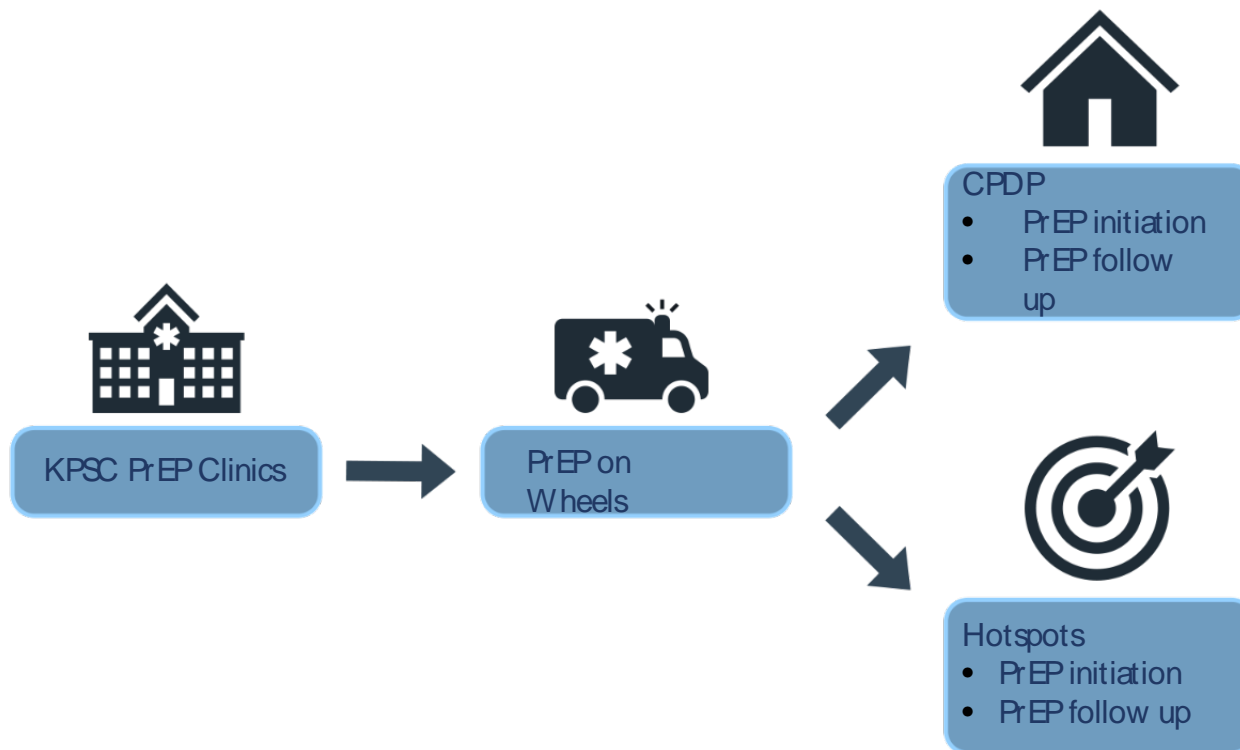
Tele-PrEP

Tele-PrEP



- Under virtual KPSC, Tele-PrEP will support CPDPs and GPs to initiate same-day PrEP and follow up at community-led service delivery points and private sector partners.
- Tele-PrEP will support CPDPs and GPs for PrEP screening, enrollment, pre-PrEP preparation and counseling, approval process, initiation, and follow-up, and set up as OSS PrEP services.
- The PrEP users from CPDPs and GPs will also have option for person-centered PrEP services for initiation and follow up including Tele-PrEP counseling, follow-up options including PrEP-Express (delivery at home), virtual PrEP navigation, and follow-up at Pharmacy Distribution points.

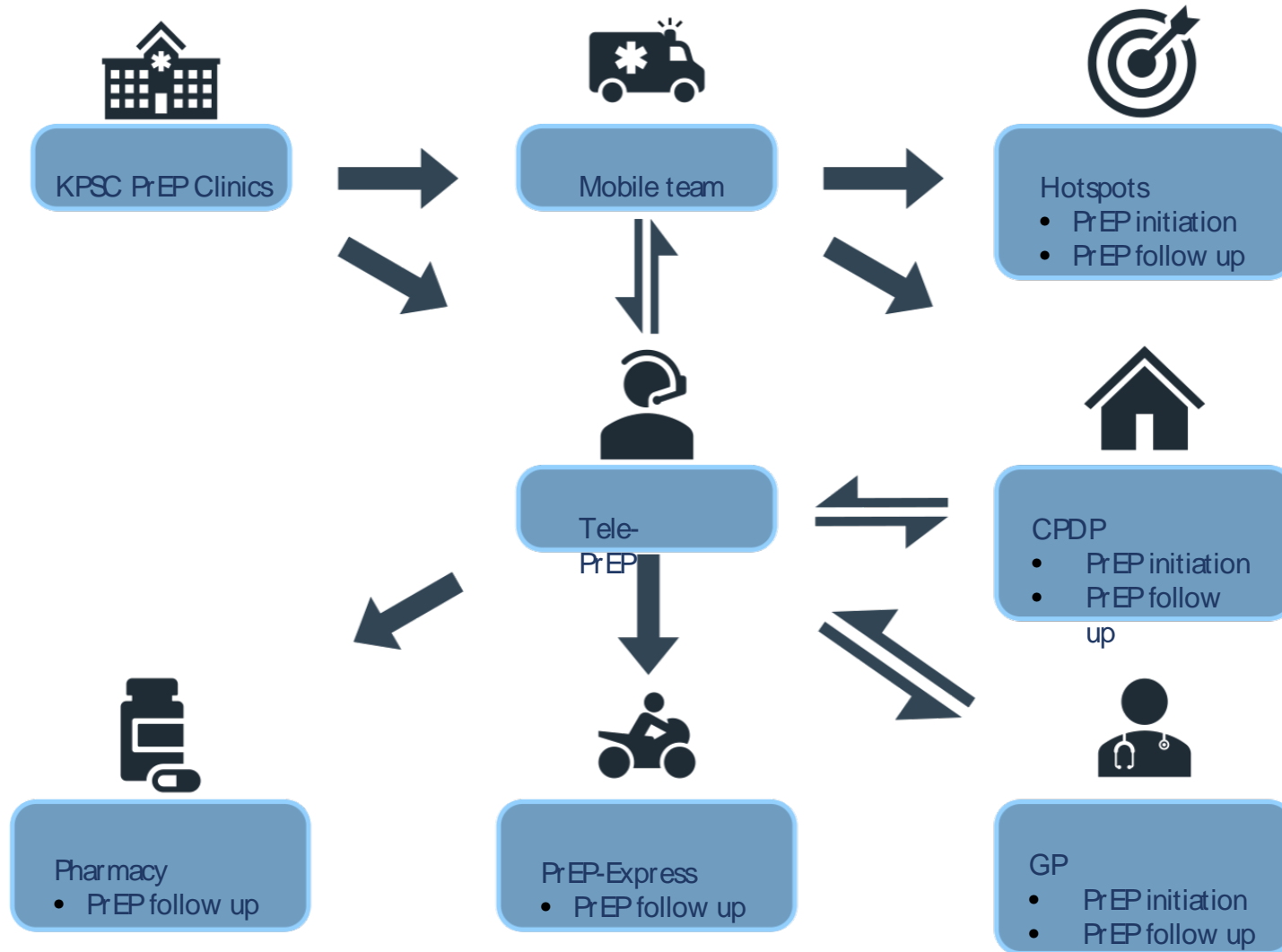
PrEP on Wheels



PrEP on Wheels

- FSW and PWID populations have limitation of movement and less use of digital tools and social media and PrEP on Wheels model is proposed.
- To strengthen the capacity of CSOs to independently provide same day PrEP initiation and follow up services including, screening, enrollment, pre-PrEP preparation counseling and laboratory investigations, mobile team will continuously mentor and coach the CPDPs.
- Mobile team will also integrate with PrEP on Wheels and mobile HTS services to hotspots especially brothels, KTV, massage parlors, shooting galleries and secondary distribution points for NSP to initiate PrEP and follow up.

PrEP DSD model



PrEP DSD Model

- Integrating PrEP on Wheels and Tele-PrEP services, AIS PrEP DSD model will enable person centered same day PrEP initiation and follow up services.
- All PrEP users initiated with differentiated PrEP initiation (mobile, CPDP and GPs) will have access to virtual or Tele-PrEP services including PrEP Express and Pharmacy Distribution points for easier follow up and access to PrEP.



HIV/TB Agency, Information and Services Activity

THANK YOU.



USAID
FROM THE AMERICAN PEOPLE



CPI COMMUNITY
PARTNERS
INTERNATIONAL

HIV/TB Agency, Information and Services Activity